

WILSONS

ESTATE AGENTS



1 Huntly Road, Peterborough – PE2 9HU

Peterborough





# 1 Huntly Road

Peterborough, Peterborough

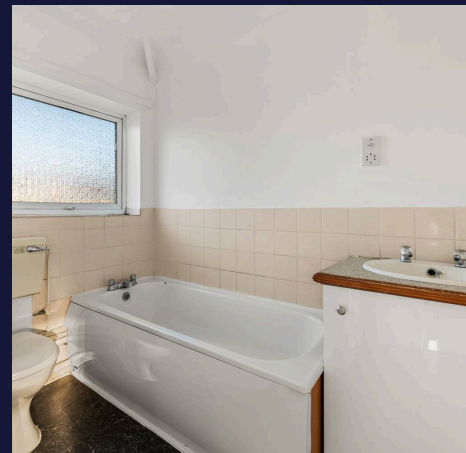
This two-bedroom semi-detached home is located in Woodston and offers a solid, well-laid-out property with plenty of potential, making it an ideal choice for first-time buyers or investors.

Council Tax band: A

Tenure: Freehold

EPC Energy Efficiency Rating: C

- Two-bedroom semi-detached home in Woodston
- Bright lounge and rear kitchen/diner
- Large rear garden with scope to improve
- Off-road parking to the front
- Well placed for access into Peterborough
- Ideal first-time purchase or investment





# 1 Huntly Road

Peterborough, Peterborough

This two-bedroom semi-detached home is located in the popular Woodston area and offers a solid, well-laid-out property with plenty of potential, making it an ideal choice for first-time buyers or investors.

On the ground floor, the house offers a bright lounge to the front, with a separate kitchen/diner to the rear. The kitchen provides good worktop and cupboard space and has room for a dining table, creating a practical everyday living area with views over the back garden.

Upstairs, there are two bedrooms, both well-proportioned and naturally light, along with a bathroom fitted with a white suite. The layout is straightforward and easy to live with, lending itself well to either owner occupation or rental use.

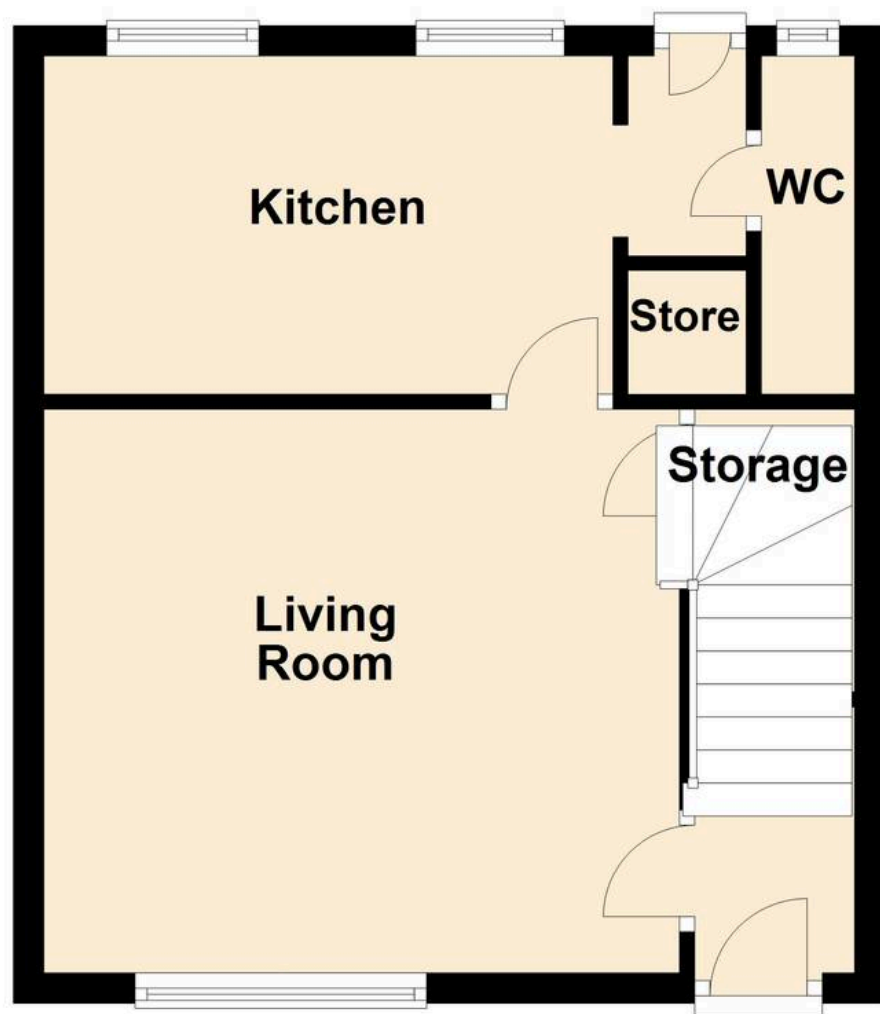
Outside, the rear garden is a real highlight — a generous space that offers plenty of scope for landscaping, outdoor seating, or future improvement. To the front, there is off-road parking, adding to the practicality of the home.

## Measurements -

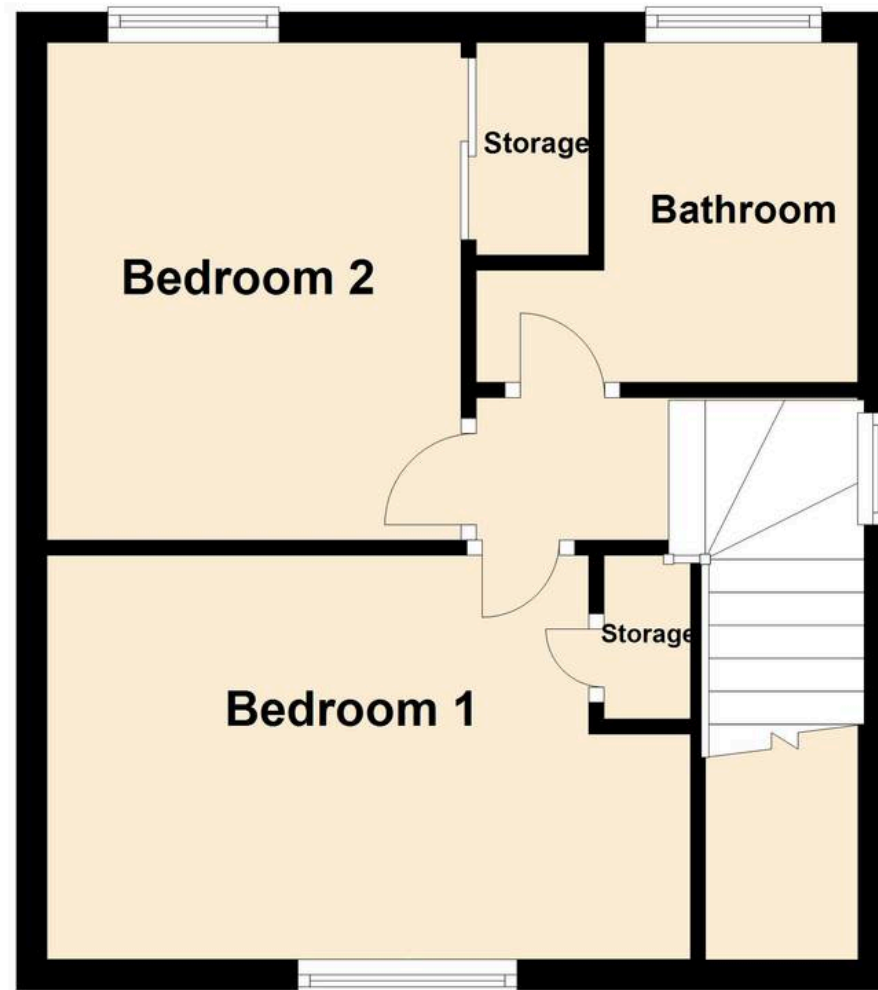
- Lounge - 3.72m x 4.16m
- Kitchen - 3.40m x 2.20m
- Bedroom One - 3.40m x 2.20m
- Bedroom Two - 2.70m x 3.10m
- Bathroom - 1.40m x 2.30m



**Ground Floor**



**First Floor**







## Wilsons Estate Agents

23 Chapel Street, Yaxley - PE7 3LW

01733 893520 • [hello@wilsonandcohomes.co.uk](mailto:hello@wilsonandcohomes.co.uk) • [wilsonandcohomes.co.uk/](http://wilsonandcohomes.co.uk/)