



McCarthy  
& BOOKER

5 Osborne Cottage, York Avenue, East Cowes, Isle of Wight, PO32 6BD

**Guide Price £880,000**





\*\*\*ANOTHER PROPERTY UNDER OFFER FROM THE TEAM AT MCCARTHY & BOOKER\*\*\*

This historic building was built to accommodate the Crowned Heads of Europe and is over 4500 sq ft with four bedrooms, two bathrooms and four reception rooms. A substantial and impressive home with a wealth of period features and outstanding characteristics throughout, from large windows and high ceilings to extremely generously sized rooms, a grand dining hall with staircase and sumptuous library and drawing room with all its detail and beauty. Off road parking and gardens are adjacent to the Osborne estate.

#### 5 Osborne Cottage

Steeped in Royal history, Osborne Cottage was built at the request of Queen Victoria to house the crowned heads of Europe when visiting her at Osborne House.

The house was built under the supervision of Prince Albert by the builder of Sandringham and the Royal Mausoleum. Shortly after completion in 1856 the Cottage welcomed the Emperor and Empress of France and subsequently accommodated such dignitaries as the Tsar and Tsarina of Russia, the Spanish Royal Family, and many others.

During the years from 1858 up to nearly the end of the 19th century Osborne Cottage was used by a variety of high-ranking people. Sometimes the Queen's grown-up children and their families had it for holidays (e.g. The Queen's first child The Princess Royal and her children had it in August 1884, whilst in August 1879 Prince Alfred and his family were there) and sometimes the Queen's friend Empress Eugenie took it for a few weeks to be near the Queen when she was in residence at Osborne.

On January 14th 1878, when the telephone was demonstrated to Queen Victoria by Alexander Graham Bell at Osborne House, a line was set up between Osborne House and Osborne Cottage and the Queen was so impressed that she bought the equipment.

Princess Beatrice was Queen Victoria's youngest daughter. When Beatrice's husband Prince Henry died at sea in January 1896, she and her family vacated their quarters in Osborne House and lived at the Cottage. During the courtship of Princess Beatrice's daughter, her future husband King Alfonso XIII of Spain often came to visit.

Princes Edward and George (later King Edward VIII and King George VI), who attended the Royal Naval College at Osborne would come to Osborne Cottage "to have tea with Aunt B."

In 1913 Princess Beatrice moved into Carisbrooke Castle and Osborne Cottage was taken by Mr Burbridge, managing director of Harrods. Winston Churchill visited Osborne Cottage as a child.

In 2015 the original Cottage was split into separate houses and the current owners have spent the time since then restoring their part of the property and sympathetically converting it to a comfortable 4 bedroomed home.





## Interior

Approach via:

PORTE COCHERE with fluted pillars, dentil mouldings and sunburst arches leading to:

GROUND FLOOR:

ENTRANCE LOBBY with ornate double front doors, original geometric Minton tiled floor and refurbished original heating grate. From the lobby, double doors with original engraved glass lead to:

DINING HALL features an impressive, cantilevered stone staircase with scrolled iron balustrades and newel with original elaborate brass lamp. Oak parquet floor and granite fireplace incorporating a multi-fuel log burner. Window with original sliding sash shutters which rise from below the windowsill. Beneath the staircase is an original, working, marble-topped radiator with cast iron grilles.

The stairwell is set in an impressive full height atrium beneath a domed lantern window. The lantern has an 8' diameter and 12 window panes allowing light to flood down. It is surrounded by decorative moulding and plasterwork.

THE YELLOW DRAWING ROOM is entered via ornate double doors with original mouldings and finger plates and features elegant scrolled, classical swagged plasterwork to ceiling and wall panels, double doors to garden and impressive tiled fireplace with marble surround and carved wooden mantle. The original brass gridded floor heating system has modern radiators incorporated underneath it. Original full-height shutters.

LIBRARY with original fitted bookshelves including leather bound "faux" book-fronted cupboards, marble fireplace and French doors to garden.

THE KITCHEN has been designed with all the modern conveniences whilst retaining the Victorian character of the property.

CLOAKROOM with low level WC and wash hand basin.

STUDY with cast iron diamond and lozenge windows (these windows are repeated in many areas of the house).

Laundry room with washing machine, tumble dryer, butler sink and solid oak worktops with cupboards beneath. Original sliding sash shutters.

STORAGE ROOM. An "L" shaped room housing the gas and electricity meters.

FIRST FLOOR:

The magnificent wide stairway leads to a galleried landing with original ornate fluted pillars.

BEDROOM 1 Ornate fireplace with tiled hearth. Beautiful original pitch pine flooring and original shutters to the windows.

BEDROOM 2 Original fireplace with tiled hearth, pitch pine flooring and original shutters.

BATHROOM Claw-foot roll top bath with shower over, high level cistern W.C. and basin. Original sliding sash shutters. Solid oak flooring.

BEDROOM 3 Original fireplace with tiled hearth. Pitch pine floor. Bay window and original wooden shutters.

BEDROOM 4 Original fireplace and slate hearth. Archway to:

LARGE DRESSING AREA Featuring original built-in wardrobe cupboards with drawers under. This room has a view towards one of the property's two gardens and the grounds of Osborne House beyond.

FAMILY BATHROOM Claw foot slipper bath, ornate patterned high-level cistern W.C. with matching patterned basin, separate large shower and solid oak flooring.



### Exterior

The house is approached by a long, shared driveway with car park. It enjoys a garden to the rear and side which is part lawned and bounded by mature hedging with an original mosaic paving adjacent to the house. Garden shed 20' x 6'.

On the Osborne House side of the property there is an additional large lawned garden surrounded by hedging.

### Further Information

TENURE: Freehold

EPC: D

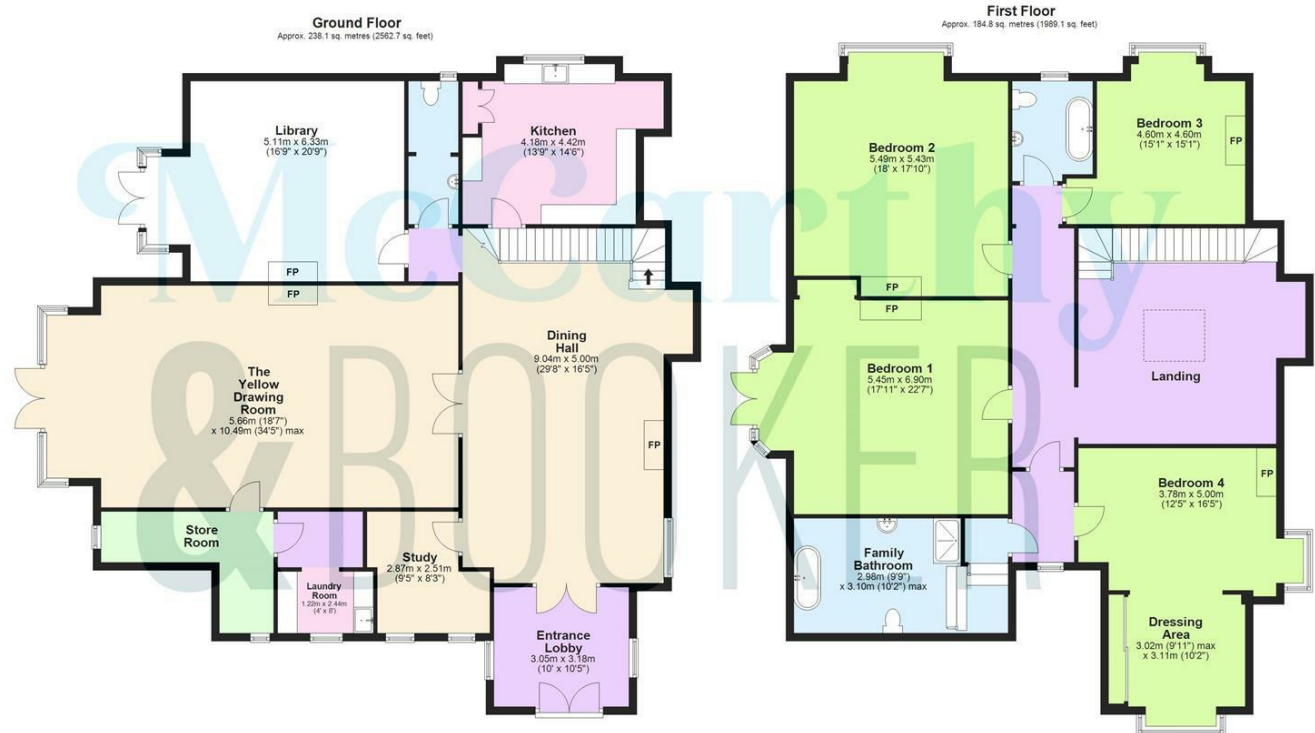
### Viewing

Please contact our Isle of Wight office on 01983 300111 if you wish to arrange a viewing appointment for this property or require further information.

### Disclaimer

We would like to inform prospective purchasers that these sales particulars have been prepared as a general guide only. A detailed survey has not been carried out, nor the services, appliances and fittings tested. Room sizes should not be relied upon for furnishing purposes and are approximate. If floor plans are included, they are for guidance only and illustration purposes only and may not be to scale. If there are any important matters likely to affect your decision to buy, please contact us before viewing the property.

Every care has been taken with the preparation of these particulars, but they are for general guidance only and complete accuracy cannot be guaranteed. If there is any point, which is of particular importance please ask or professional verification should be sought. All dimensions are approximate. The mention of any fixtures, fittings &/or appliances does not imply they are in full efficient working order. Photographs are provided for general information and it cannot be inferred that any item shown is included in the sale. These particulars do not constitute a contract or part of a contract.



Total area: approx. 422.9 sq. metres (4551.8 sq. feet)  
SKETCH FOR ILLUSTRATIVE PURPOSES ONLY. All measurements, walls, doors, windows, suites, fittings and appliances, sizes and locations are approximate only. They cannot be considered as being a representation by the seller or agent. Some appliances, suite or furniture icons may not reflect the actual design present. Plan produced by Silver Arch Property Solutions Limited www.silverarchps.co.uk.  
Plan produced using PlanUp.

5 Osborne Cottage, York Avenue, East Cowes, PO32 6BD