

FOR SALE



Sea View Road, Falmouth
Asking Price Of £300,000


MARTIN&CO

Sea View Road, Falmouth

Asking Price Of £300,000

- HIGHLY DESIRABLE LOCATION
- STUNNING VIEWS
- CENTRAL FALMOUTH
- BEAUTIFUL PRIVATE GARDEN
- WALKING DISTANCE TO BEACHES

STUNNING VIEWS - Located close to Gyllyngvase beach in the centre of Falmouth, this is a rare opportunity to purchase a spacious three bedroom top floor maisonette with stunning views across a private

Located close to Gyllyngvase beach in the centre of Falmouth, this is a rare opportunity to purchase a spacious three bedroom top floor maisonette with stunning views across a private established garden towards Falmouth bay.

This exceptional property is located on the highly sought-after Sea View Road, around a 2 minute drive or an 11 minute walk to Gyllyngvase Beach.

The top floor maisonette is part of a semi-detached property which has been divided into just 2 flats (a ground floor and an upper maisonette) which share the Freehold and the front driveway is shared between these two properties, with space for one car each as well as a storage shed each.



The rear garden has been comfortably split into two with the garden for the top floor maisonette accessed from the side gate which has steps leading down to the enclosed tropical garden.

The two maisonettes share the freehold of the building.

The top floor maisonette is accessed from the stairs to the front. The entrance leading into a hall, off which is a WC, kitchen, and lounge/diner. The lounge/diner has fantastic proportions and enjoys the benefit of a high level of natural light as well as stunning and unadulterated tropical views across the gardens to Falmouth Bay.

The upstairs the maisonette offers three bedrooms, two with outstanding views of Falmouth Bay.

The property has been a cherished home for many years and now needs substantial amounts of updating. This is an opportunity not to be missed!

Central Heating - Gas

EPC - TBC

Council Tax Band - C

Freehold shared with the ground floor maisonette

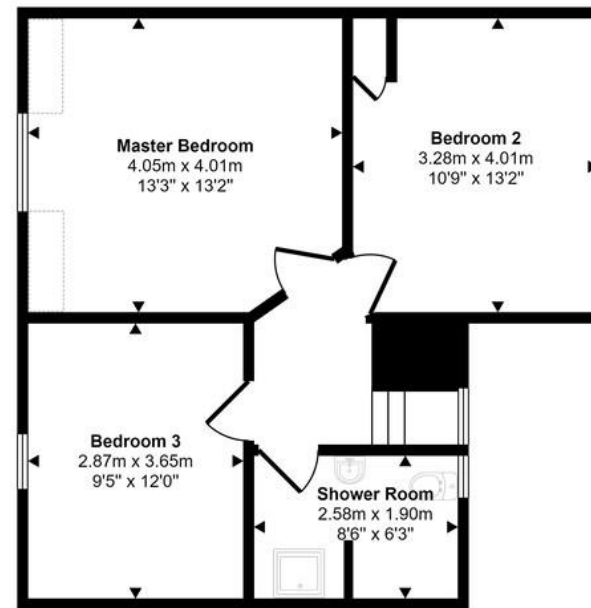


Approx Gross Internal Area
117 sq m / 1264 sq ft



Ground Floor
Approx 66 sq m / 712 sq ft

Denotes head height below 1.5m



First Floor
Approx 51 sq m / 552 sq ft

This floorplan is only for illustrative purposes and is not to scale. Measurements of rooms, doors, windows, and any items are approximate and no responsibility is taken for any error, omission or mis-statement. Icons of items such as bathroom suites are representations only and may not look like the real items. Made with Made Snappy 360.

Martin & Co Falmouth

72 Kimberley Park Road • Falmouth • TR11 2DF
T: 01326 697696 • E: falmouth@martinco.com

01326 697696

<http://www.martinco.com>



Accuracy: References to the Tenure of a Property are based on information supplied by the Seller. The Agent has not had sight of the title documents. A Buyer is advised to obtain verification from their Solicitor. Items shown in photographs including but not limited to carpets, fixtures and fittings are not included unless specifically mentioned within the sales particulars. They may however be available by separate negotiation. Buyers must check the availability of any property and make an appointment to view before embarking on any journey to see a property. No person in the employment of the agent has any authority to make any representation about the property, and accordingly any information given is entirely without responsibility on the part of the agents, sellers(s) or lessors(s). Any property particulars are not an offer or contract, nor form part of one. **Sonic / laser Tape:** Measurements taken using a sonic / laser tape measure may be subject to a small margin of error. **All Measurements:** All Measurements are Approximate. **Services Not tested:** The Agent has not tested any apparatus, equipment, fixtures and fittings or services and so cannot verify that they are in working order or fit for the purpose. A Buyer is advised to obtain verification from their Solicitor or Surveyor.