

**FOR SALE**



**Gweek Quay Boatyard, Gweek**  
**Asking Price Of** £150,000

  
**MARTIN&CO**



# Gweek Quay Boatyard, Gweek

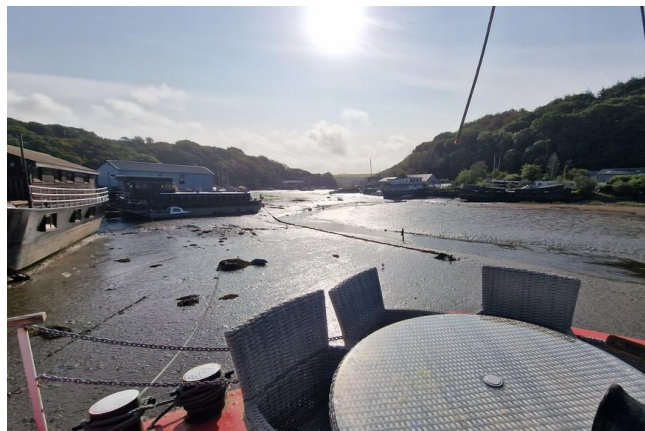
Asking Price Of £150,000

- AMAZING LIFESTYLE OPPORTUNITY
- THREE BEDROOMS
- RECENTLY REFURBISHED
- FLOATING HOME
- PRIME RIVER LOCATION

A Humber Keel Barge, built in the UK with residential side-on mooring, set in the beautiful village of Gweek, with views of the famous Helford Creek. This floating home is converted from a freight barge, fitted out by her previous owners.

A Humber Keel Barge, built in the UK with residential side-on mooring, set in the beautiful village of Gweek, with views of the famous Helford Creek. This floating home is converted from a freight barge, fitted out by her previous owners. The current owner lived aboard full-time for five years at Hampton Court in London, before sailing her down to Cornwall for a quieter life.

There is a bright, open-plan upper wheelhouse saloon that opens out, port and starboard, onto the extensive outside deck. The lower cabin houses the bulk of the accommodation which includes three bedrooms with the master benefiting from an en-suite bathroom. When entering the lower cabin, you arrive in the spacious lounge /



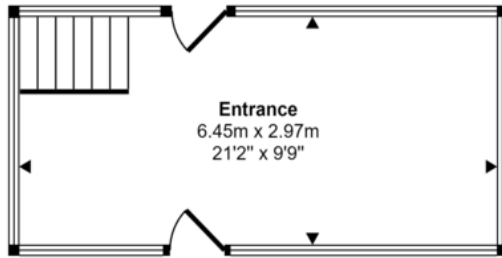


dining area complete with wood burning stove! The kitchen has been fitted in a modern style and the room is well lit by numerous opening portholes and skylights. It is equipped with oil-fired central heating, log burner, mains water and pump-out facilities for live-aboard or holiday-let use. The barge has a homely feel, with wooden floors throughout the living area, TV, WiFi and the main bathroom even comes with a generous sized bath! We are advised that houseboat purchases are exempt from Tax.

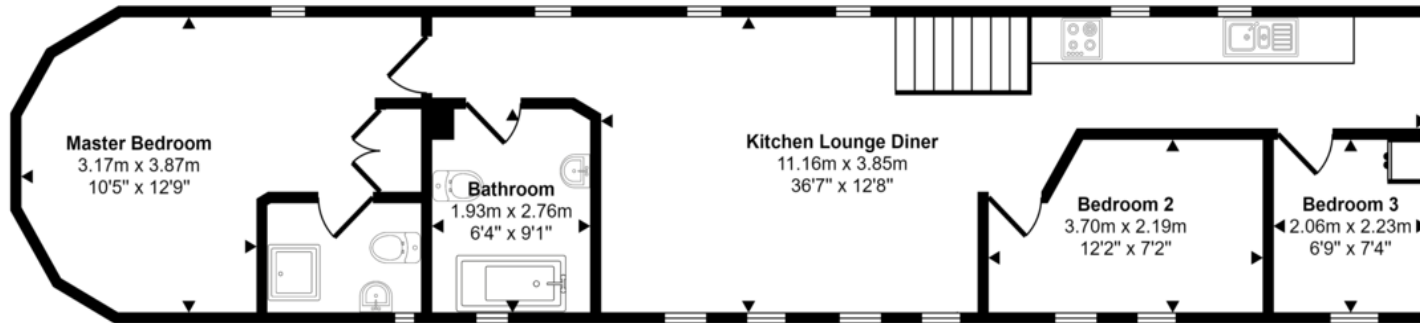
Structural Survey Report available.

9 Years remaining on the current residential mooring





Ground Floor



First Floor

This floorplan is only for illustrative purposes and is not to scale. Measurements of rooms, doors, windows, and any items are approximate and no responsibility is taken for any error, omission or mis-statement. Icons of items such as bathroom suites are representations only and may not look like the real items. Made with Made Snappy 360.

## Martin & Co Falmouth

72 Kimberley Park Road • • Falmouth • TR11 2DF  
T: 01326 697696 • E: falmouth@martinco.com

01326 697696

<http://www.martinco.com>



**Accuracy:** References to the Tenure of a Property are based on information supplied by the Seller. The Agent has not had sight of the title documents. A Buyer is advised to obtain verification from their Solicitor. Items shown in photographs including but not limited to carpets, fixtures and fittings are not included unless specifically mentioned within the sales particulars. They may however be available by separate negotiation. Buyers must check the availability of any property and make an appointment to view before embarking on any journey to see a property. No person in the employment of the agent has any authority to make any representation about the property, and accordingly any information given is entirely without responsibility on the part of the agents, sellers(s) or lessors(s). Any property particulars are not an offer or contract, nor form part of one. **Sonic / laser Tape:** Measurements taken using a sonic / laser tape measure may be subject to a small margin of error. **All Measurements:** All Measurements are Approximate. **Services Not tested:** The Agent has not tested any apparatus, equipment, fixtures and fittings or services and so cannot verify that they are in working order or fit for the purpose. A Buyer is advised to obtain verification from their Solicitor or Surveyor.