



**BROMFELDE ROAD, SW4**

**£760,000**

- Period conversion
- Two/three bedrooms
- Share of freehold
- Substantial storage & built in wardrobes
- South facing garden
- Energy rating: C







## ABOUT THE HOME

A charming two bedroom garden flat on a popular road in Clapham North. The property has been maintained to a very high standard and benefits from a landscaped south facing garden.

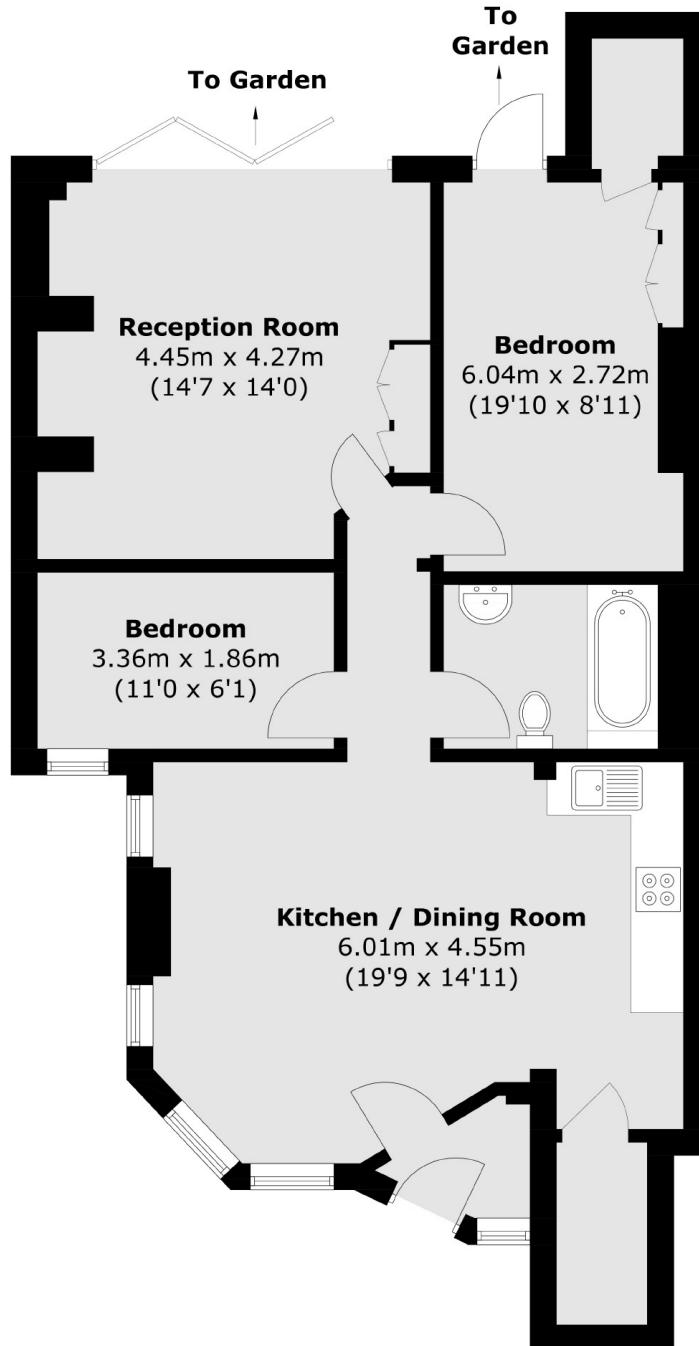
Bromfelde Road is a beautiful and quiet tree lined road conveniently located within close proximity to Clapham High Street. Residents take full advantage of the array of independent shops, bars and restaurants on your door step in addition to the ever popular Clapham Old Town which overlooks Clapham Common. Commuters have access to a range of transport links, including Clapham High Street (Overground), Clapham North (Northern), Stockwell (Victoria) and a number of regular bus routes into the City.











Total area (approx.): 79.9 sq. m (860.0 sq. ft)

#### JACKSONS CLAPHAM

73 Abbeville Road, London,

SW4 9JN

Sales: 020 8487 3177

Lettings: 020 8487 3178

Energy Rating: We aim to make our particulars both accurate and reliable. However they are not guaranteed; nor do they form part of an offer or contract. If you require clarification on any points then please contact us, especially if you're traveling some distance to view. Please note that appliances and heating systems have not been tested and therefore no warranties can be given as to their good working order.