



ROSEBERY ROAD, SW2

£575,000

- Period Conversion
- Two Double Bedrooms
- First Floor
- Share of Freehold
- Excellent Condition
- Separate Kitchen





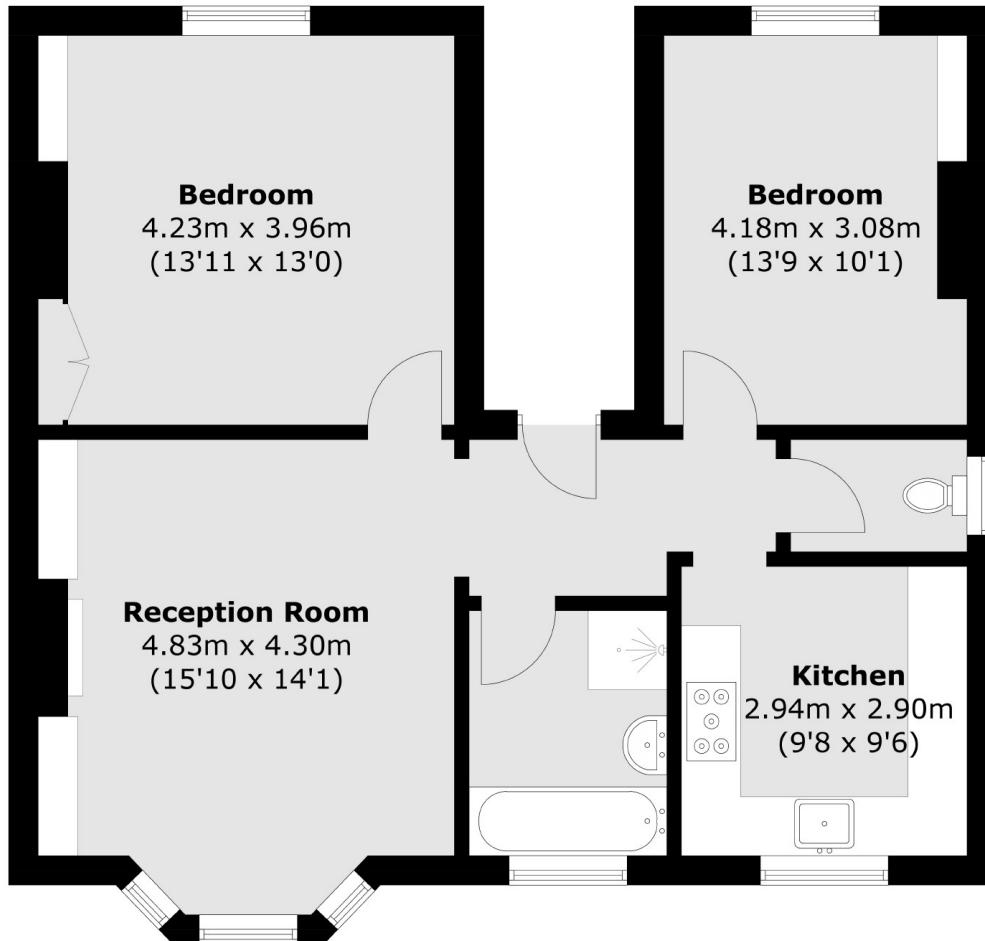
ABOUT THE HOME

A large, two double bedroom Victorian conversion situated on a quiet residential road between Brixton Hill and Clapham. This property is in excellent condition with a modern finish.

The property is located within close proximity to the popular Abbeville Village offering an array of boutique shops. Clapham High Street and Brixton Village are also close by offering many shops and restaurants as well as transport links into the City. Exceptional transport links with bus stops at the end of the road.







Total area (approx.): 71.2 sq. m (766.4 sq. ft)

JACKSONS CLAPHAM

73 Abbeville Road, London,
SW4 9JN

Sales: 020 8487 3177

Lettings: 020 8487 3178

Energy Rating: We aim to make our particulars both accurate and reliable. However they are not guaranteed; nor do they form part of an offer or contract. If you require clarification on any points then please contact us, especially if you're traveling some distance to view. Please note that appliances and heating systems have not been tested and therefore no warranties can be given as to their good working order.