



TROUVILLE ROAD, SW4

£800,000

- Three bedrooms
- Ground floor
- Share of freehold
- Private garden
- Chain free
- Energy rating: C





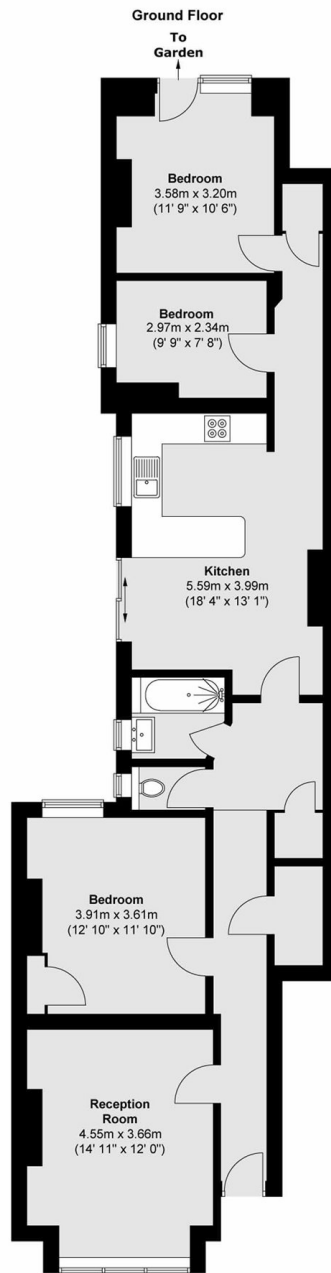
ABOUT THE HOME

A substantial three bedroom ground floor maisonette with private south facing garden located in the popular Abbeville Village.

Trouville Road runs off the Western end of Abbeville Road with its independent boutiques, bars, restaurants and coffee shops, all strongly supported by the local community. Clapham South (Northern Line) Underground station (Zone 2) is a short walk away, while several bus routes pass nearby. The green open spaces of Clapham Common and its recreational amenities are also close at hand.







Total area (approx.) : 98.6 sq. m (1061 sq. ft)

JACKSONS CLAPHAM

73 Abbeville Road, London,
SW4 9JN

Sales: 020 8487 3177

Lettings: 020 8487 3178

Energy Rating: C We aim to make our particulars both accurate and reliable. However they are not guaranteed; nor do they form part of an offer or contract. If you require clarification on any points then please contact us, especially if you're traveling some distance to view. Please note that appliances and heating systems have not been tested and therefore no warranties can be given as to their good working order.