



## VICTORIA RISE, SW4

£650,000

- Private entrance
- Tastefully refurbished
- Double bedroom
- Clapham Old Town
- Huge west facing garden
- Energy rating: D



1



1



1





## ABOUT THE HOME

A superb example of an exquisitely refurbished one bedroom garden flat located in Clapham Old Town. The property briefly comprises steps up to a private entrance, entrance hall with storage, open plan living/ dining space with bay window, bedroom, shower room and kitchen with doors leading to the beautiful west facing garden. The property also benefits from a stylish outbuilding at the rear of the garden ideally suited to a home gym or work from home space.

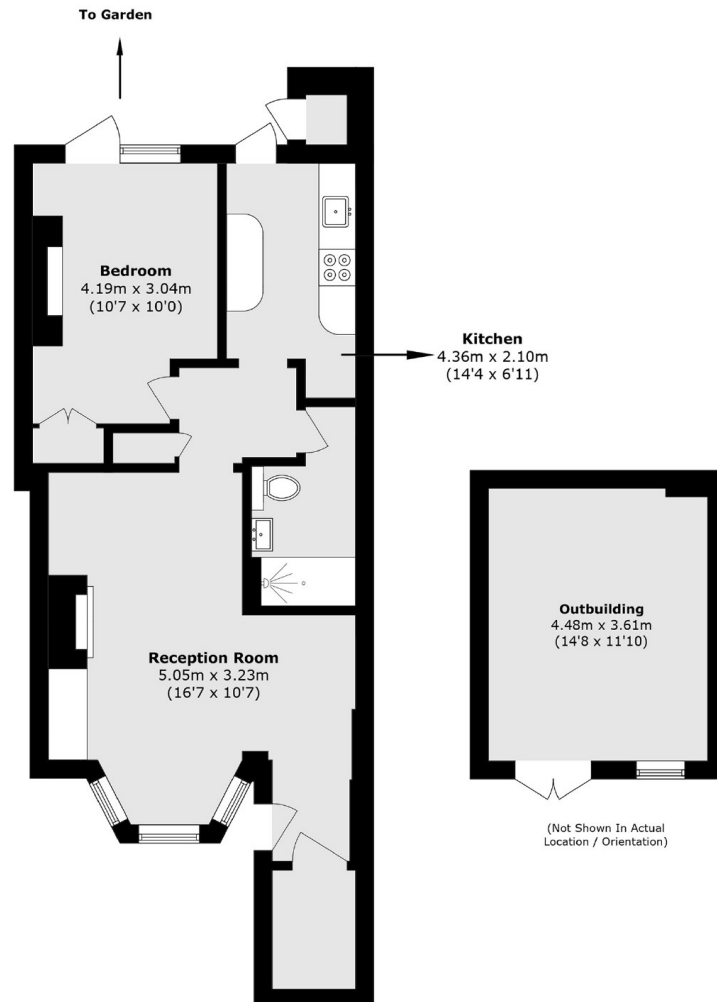


Victoria Rise is located in Clapham Old Town and a short stroll from the wide open spaces of Clapham Common. Excellent transport include the Northern line at nearby Clapham Common Underground station and the Windrush line via Clapham High Street.









Total area (approx.): 58.0 sq. m (638.3 sq. ft)  
 External Storage area (approx.): 0.7 sq. m (7.5 sq. ft)  
 Outbuilding area (approx.): 16.2 sq. m (174.4 sq. ft)

### JACKSONS CLAPHAM

73 Abbeville Road, London,  
 SW4 9JN  
 Sales: 020 8487 3177  
 Lettings: 020 8487 3178

Energy Rating: D We aim to make our particulars both accurate and reliable. However they are not guaranteed; nor do they form part of an offer or contract. If you require clarification on any points then please contact us, especially if you're traveling some distance to view. Please note that appliances and heating systems have not been tested and therefore no warranties can be given as to their good working order.