



FLUTEMAKERS MEWS, SW4

£950,000

- Mews house
- Two double bedrooms
- Parking
- Private patio garden
- Freehold
- Energy rating: B





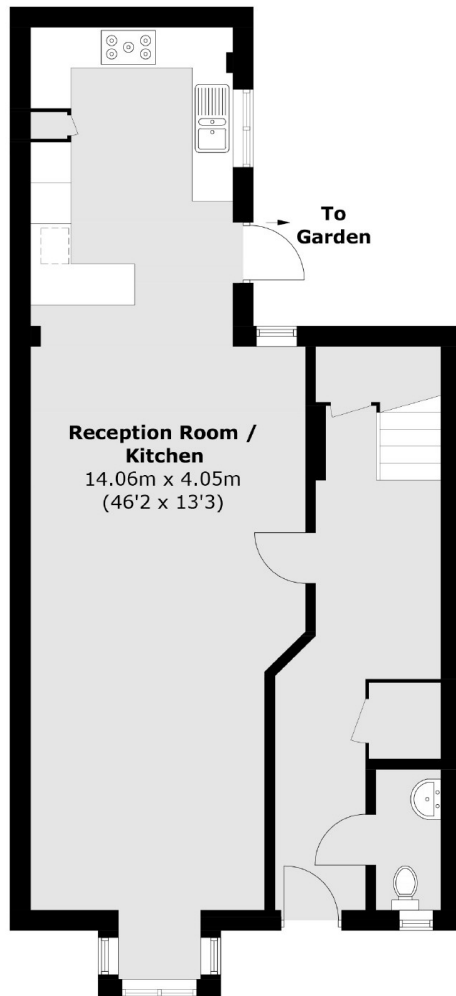
ABOUT THE HOME

A modern two bedroom house situated in a gated development, boasting 1,269 sq.ft of living accommodation and off street parking. A welcoming hallway leads to a spacious and light-filled open plan reception/dining room to the front. To the rear, the kitchen is fitted with modern units and integrated appliances and overlooks the patio garden. There is a cloakroom and storage space off the hallway. To the first floor is a generous landing, two double bedrooms, one with en suite shower room, a family bathroom and ample well-configured storage.

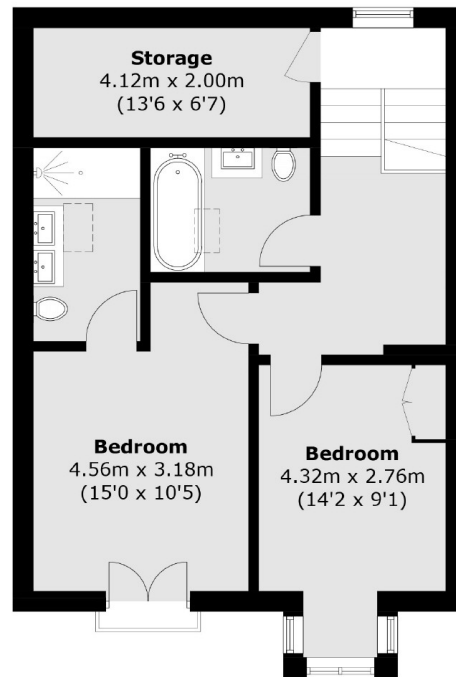
Flutemakers Mews is situated close to Abbeville Village and the many popular shops and restaurants of Abbeville Road. Located to the south of Clapham Common the property benefits from its excellent facilities and open green spaces. Clapham Common Underground station (Northern line) serves The City and West End, while several bus routes also run close to the property.







Ground Floor



First Floor

Total area (approx.): 117.9 sq. m (1,269.0 sq. ft)

JACKSONS CLAPHAM

73 Abbeville Road, London,

SW4 9JN

Sales: 020 8487 3177

Lettings: 020 8487 3178

Energy Rating: B We aim to make our particulars both accurate and reliable. However they are not guaranteed; nor do they form part of an offer or contract. If you require clarification on any points then please contact us, especially if you're traveling some distance to view. Please note that appliances and heating systems have not been tested and therefore no warranties can be given as to their good working order.