



TINTERN STREET, SW4

£525,000

- Victorian
- Two double bedrooms
- Top floor
- Split level
- Separate kitchen
- Energy rating: C



2



1



1



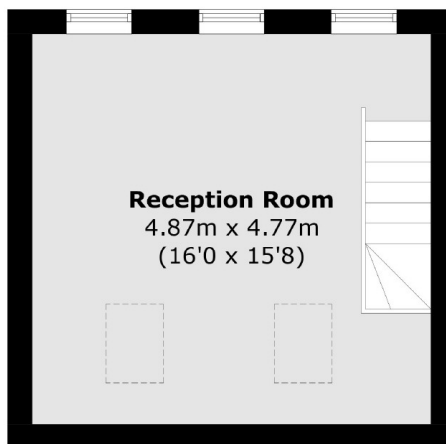
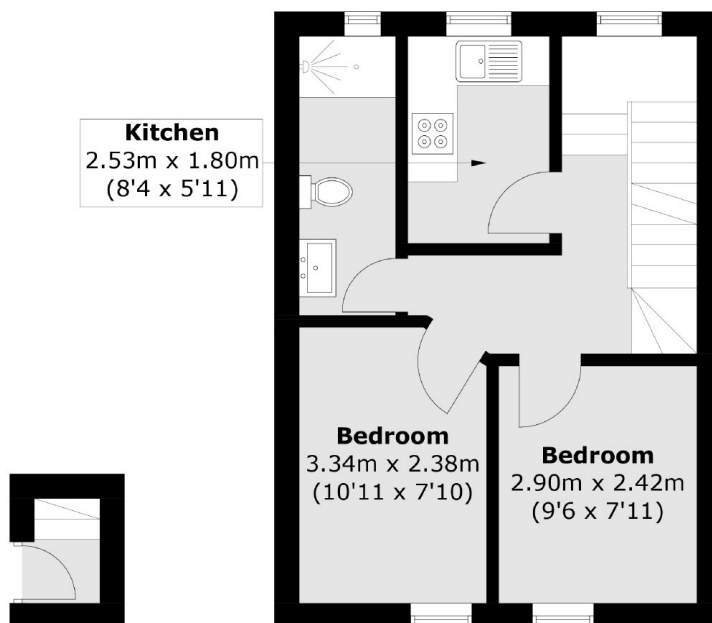
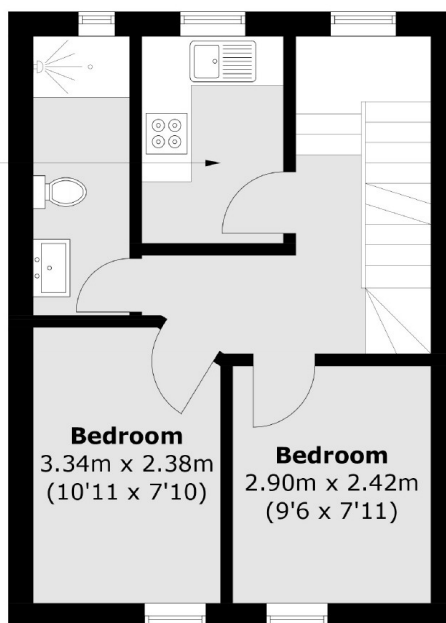
## ABOUT THE HOME

A bright and well presented spacious split level Victorian flat situated on the borders of Clapham and Brixton. The property benefits from two double bedrooms and a separate kitchen.

Tintern Street is a popular residential road located in close proximity to Clapham North and Brixton stations. The property benefits from easy access to the amenities of both areas, including the ever popular Abbeville Road parade and the many shops, bars and restaurants of Clapham Old Town and Brixton Market.






**Top Floor**

**First Floor**

**Second Floor**

Total area (approx.): 58.0 sq. m (624.2 sq. ft)

**JACKSONS CLAPHAM**

73 Abbeville Road, London,

SW4 9JN

Sales: 020 8487 3177

Lettings: 020 8487 3178

Energy Rating: C We aim to make our particulars both accurate and reliable. However they are not guaranteed; nor do they form part of an offer or contract. If you require clarification on any points then please contact us, especially if you're traveling some distance to view. Please note that appliances and heating systems have not been tested and therefore no warranties can be given as to their good working order.