



LYHAM ROAD, SW2

£925,000

- School conversion
- Spacious modern feel
- Two double bedrooms
- Gated development
- Private parking
- Energy Rating: C







## ABOUT THE HOME

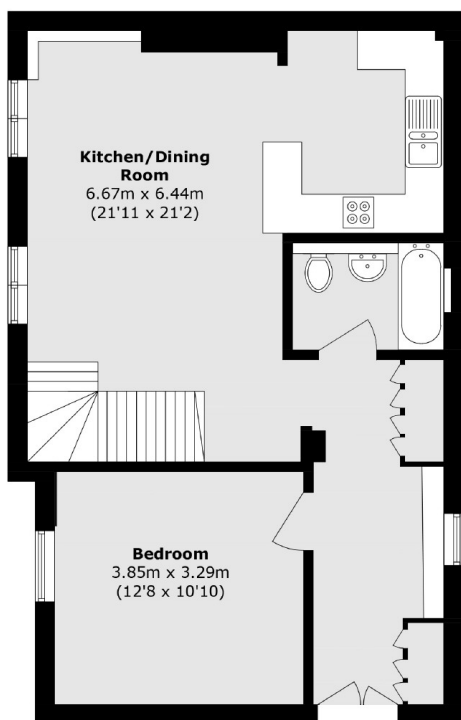
On the ground floor of Park Lofts, a former Victorian school in Clapham, lies this beautiful two bedroom apartment. Built in 1875, the building was once home to Ashby Mills School and was converted into flats in 1997. It sits behind a stock-brick wall topped with mature hedging and is accessed via secure gates. The apartment benefits from a private entrance and to the ground floor briefly comprises an open plan kitchen/dining area, double bedroom, bathroom, stairs to the mezzanine living area and the main bedroom with en-suite shower.

Situated on Lyham Road, the property enjoys a prime location within easy reach of the vibrant bars and restaurants of both Clapham and Brixton, as well as the open green spaces of Clapham Common. Excellent transport links offer swift access to the City and West End.

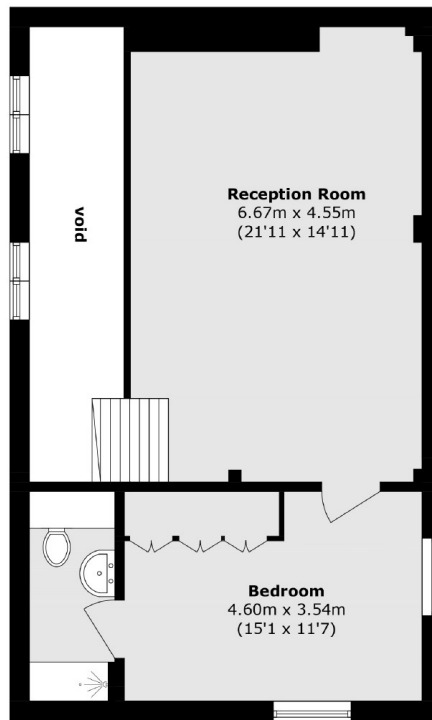








**Ground Floor**



**First Floor**

Total area (approx.): 117.6 sq. m (1265.8 sq. ft)

(Excluding void)

### **JACKSONS CLAPHAM**

73 Abbeville Road, London,

SW4 9JN

Sales: 020 8487 3177

Lettings: 020 8487 3178

Energy Rating: C We aim to make our particulars both accurate and reliable. However they are not guaranteed; nor do they form part of an offer or contract. If you require clarification on any points then please contact us, especially if you're traveling some distance to view. Please note that appliances and heating systems have not been tested and therefore no warranties can be given as to their good working order.