



## WELMAR MEWS, SW4

£1,150,000

- Mews house
- Three double bedrooms
- Three bathrooms
- Gated
- Off street parking
- Energy rating: E



3



3



1





## ABOUT THE HOME

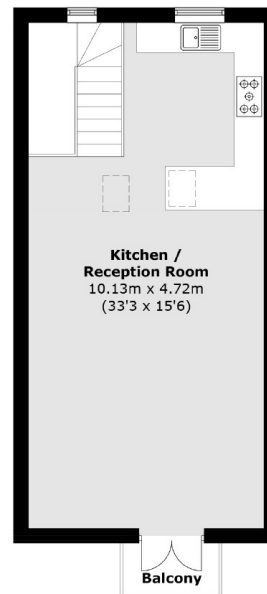
A charming mews house stretching over 1500sqft across three floors, located on the cusp of Abbeville Village. The property comprises three double bedrooms (two of which are en-suite), an additional bathroom, vast open plan kitchen/reception space with stylish vaulted ceiling and front facing balcony. Other points to note are the off street parking and chain free nature of this sale.

Welmar Mews has a history rooted in piano manufacturing. Originally the factory for the world-renowned Welmar Pianos, it was converted into residential properties in the 1990s.

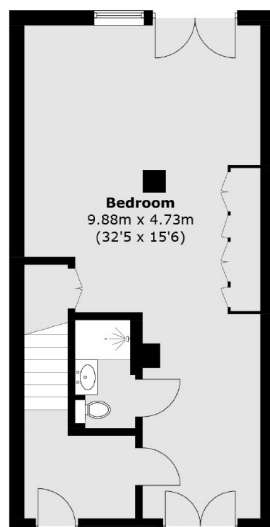
Welmar Mews, just off Clapham Park Road, sits moments from Abbeville Village and all it offers. Clapham Common is approximately 0.5 miles away with its tube station (Northern line), myriad shops and bars.



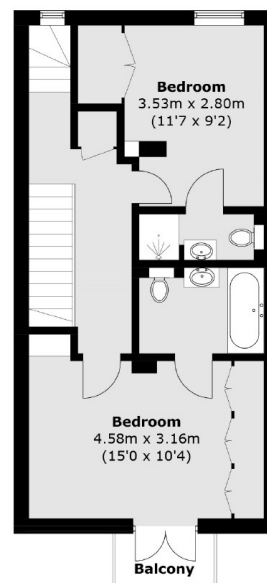




**Second Floor**



**Ground Floor**



**First Floor**

Total area (approx.): 142.0 sq. m (1528.5 sq. ft)  
Balcony: 4.0 sq. m (43.0 sq. ft)

### **JACKSONS CLAPHAM**

73 Abbeville Road, London,  
SW4 9JN  
Sales: 020 8487 3177  
Lettings: 020 8487 3178

Energy Rating: E We aim to make our particulars both accurate and reliable. However they are not guaranteed; nor do they form part of an offer or contract. If you require clarification on any points then please contact us, especially if you're traveling some distance to view. Please note that appliances and heating systems have not been tested and therefore no warranties can be given as to their good working order.