



SHANDON ROAD, SW4

£5,500 PCM

- House
- Four double bedrooms
- Kitchen breakfast room
- Two bathrooms
- Private garden
- Energy rating: E



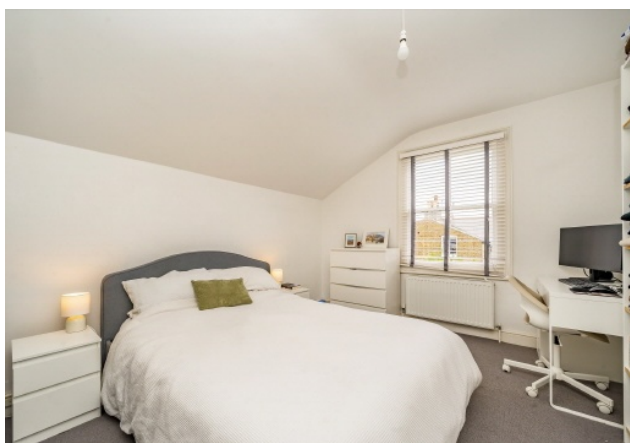




## ABOUT THE HOME

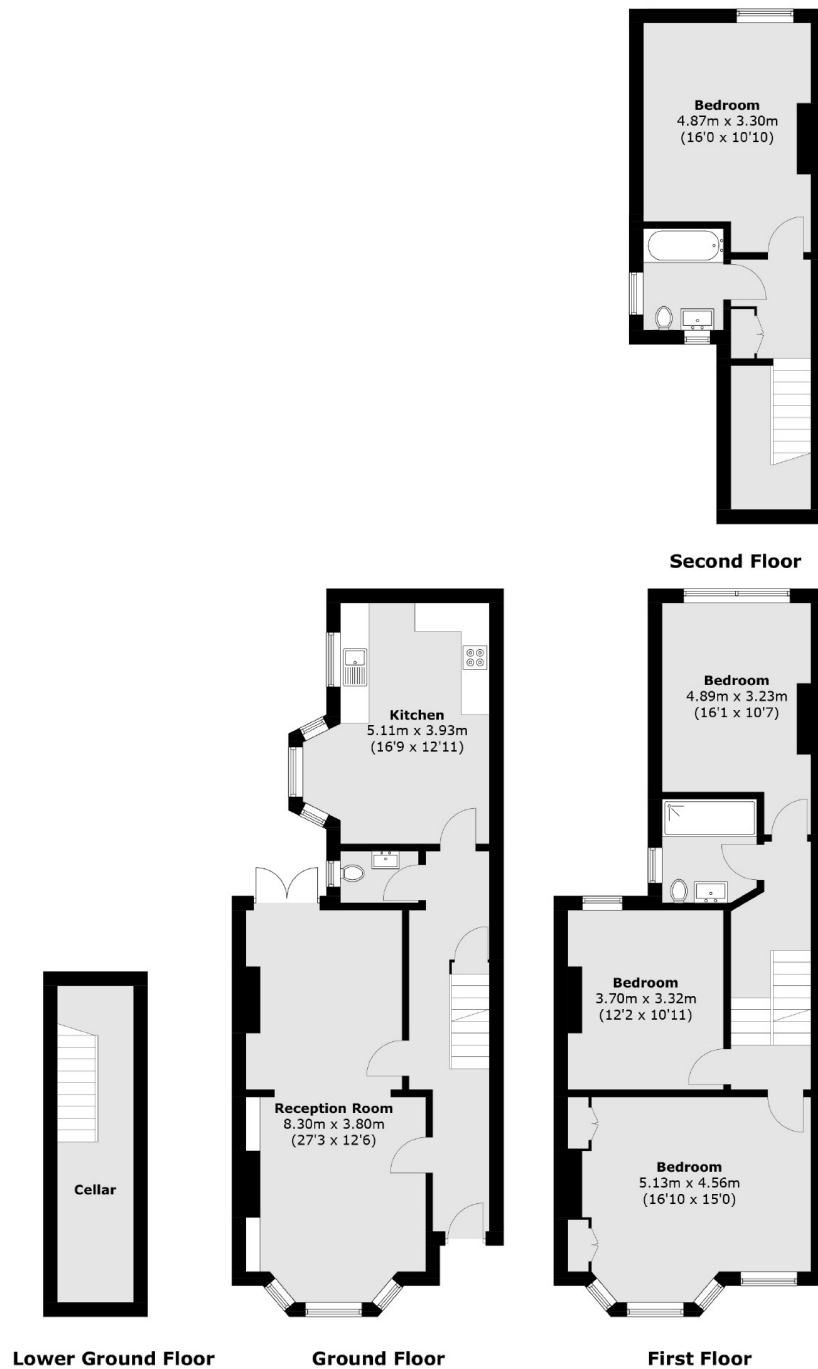
A beautiful three storey, four bedroom Victorian house, located in a Abbeville Village. Spanning over 1700sqft, the property offers excellent living space and has been decorated neutrally throughout to a high standard. It is suitable for sharers or a family.

Shandon Road is quiet residential road in the heart of Abbeville Village. Clapham South underground station as well as Clapham Common are also close by.









Total area (approx.): 163.3 sq. m (1,757.8 sq. ft)

### JACKSONS CLAPHAM

73 Abbeville Road, London,

SW4 9JN

Sales: 020 8487 3177

Lettings: 020 8487 3178

Energy Rating: We aim to make our particulars both accurate and reliable. However they are not guaranteed; nor do they form part of an offer or contract. If you require clarification on any points then please contact us, especially if you're traveling some distance to view. Please note that appliances and heating systems have not been tested and therefore no warranties can be given as to their good working order.