



CRESCENT LANE, SW4

£795,000

- Two bedrooms
- Two bathrooms
- Gated parking
- Close to transport links
- Good condition
- Energy rating: D





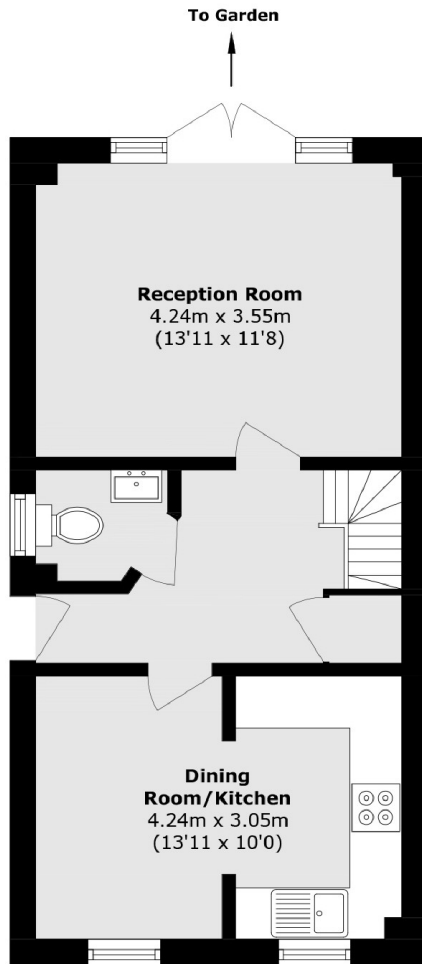
ABOUT THE HOME

A modern two bedroom house with garden situated on a quiet residential road in the Abbeville Village. This property has two bathrooms, a downstairs cloakroom and comes with parking only accessible via private entry.

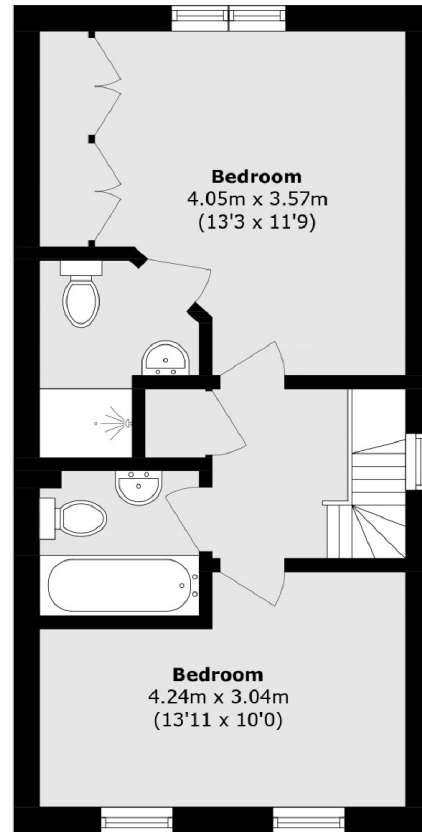
Crescent Lane is a much sought after residential road within easy reach of Clapham Common and its many amenities, the underground (Northern line), several bus routes serving the west End and City as well as the ever popular Abbeville Village.







Ground Floor



First Floor

Total area (approx.): 76.2 sq. m (820.2 sq. ft)

JACKSONS CLAPHAM

73 Abbeville Road, London,

SW4 9JN

Sales: 020 8487 3177

Lettings: 020 8487 3178

Energy Rating: D We aim to make our particulars both accurate and reliable. However they are not guaranteed; nor do they form part of an offer or contract. If you require clarification on any points then please contact us, especially if you're traveling some distance to view. Please note that appliances and heating systems have not been tested and therefore no warranties can be given as to their good working order.