



FERNDALE ROAD, SW4

£900,000

- Georgian home
- Four bedrooms
- Two bathrooms
- Open plan kitchen
- South facing garden
- EPC Rating: D







## ABOUT THE HOME

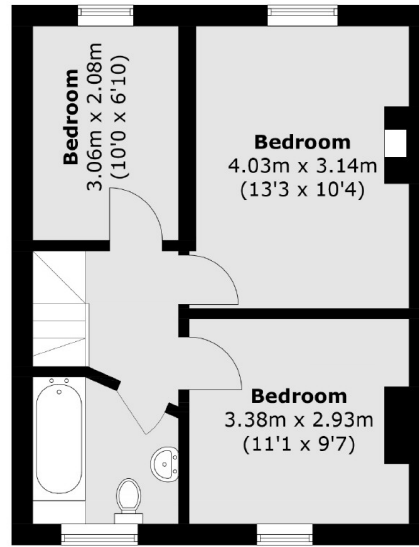
A superb three/four bedroom Georgian home set over three floors, located on a popular road on the borders of Clapham and Brixton.

The property is situated on Ferndale Road, a quiet residential street well placed for the amenities of both Clapham and vibrant Brixton. Local transport links include Clapham North and Brixton Underground Stations (Northern and Victoria Lines) Brixton station being within half a mile

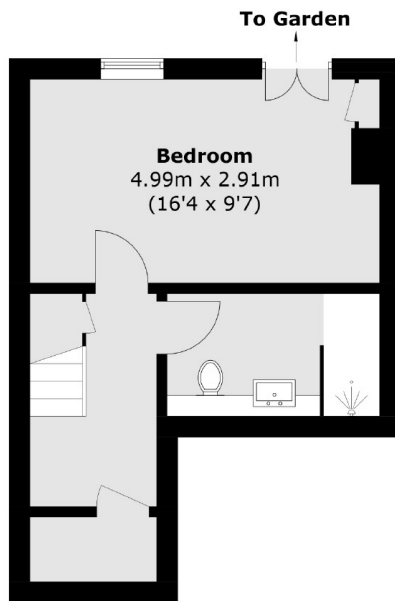




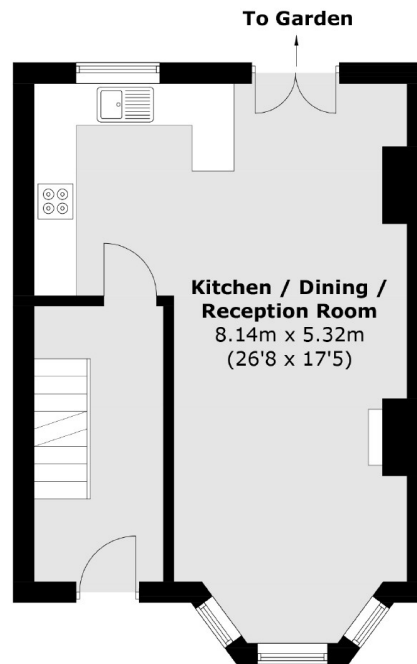




**First Floor**



**Lower Ground Floor**



**Ground Floor**

Total area (approx.): 106.4 sq. m (1,145.3 sq. ft)

#### **JACKSONS CLAPHAM**

73 Abbeville Road, London,

SW4 9JN

Sales: 020 8487 3177

Lettings: 020 8487 3178

Energy Rating: D We aim to make our particulars both accurate and reliable. However they are not guaranteed; nor do they form part of an offer or contract. If you require clarification on any points then please contact us, especially if you're traveling some distance to view. Please note that appliances and heating systems have not been tested and therefore no warranties can be given as to their good working order.