



## BRIXTON HILL, SW2

£2,200 PCM

- Victorian conversion
- First floor
- Open plan
- Unfurnished
- Close to Brixton
- Energy rating: C



1



1



1





## ABOUT THE HOME

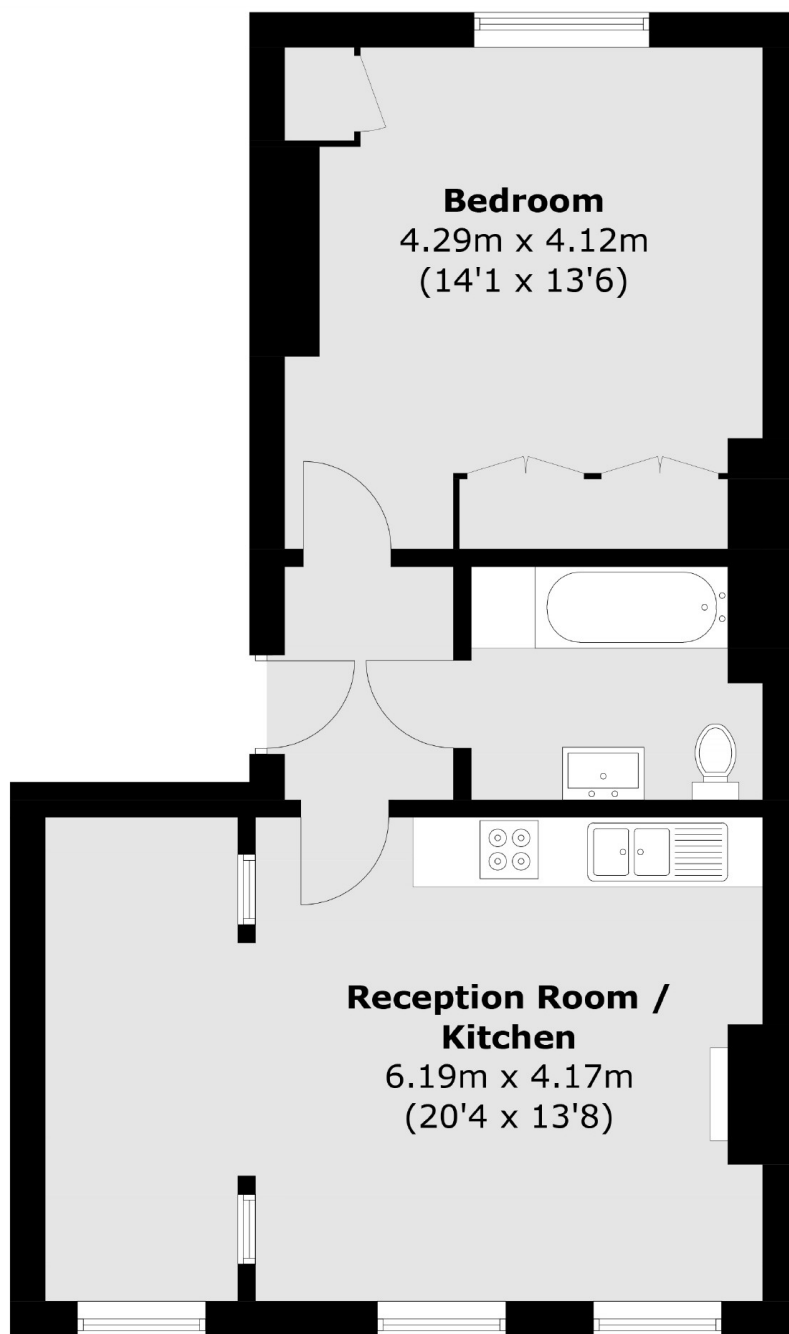
A spacious and extremely well presented one bedroom conversion flat. The property would be ideal for a couple or single occupant.

Brixton Hill is located within close proximity to Brixton underground station and the town centre.









Total area (approx.): 52.7 sq. m (567.3 sq. ft)

#### JACKSONS CLAPHAM

73 Abbeville Road, London,

SW4 9JN

Sales: 020 8487 3177

Lettings: 020 8487 3178

Energy Rating: We aim to make our particulars both accurate and reliable. However they are not guaranteed; nor do they form part of an offer or contract. If you require clarification on any points then please contact us, especially if you're traveling some distance to view. Please note that appliances and heating systems have not been tested and therefore no warranties can be given as to their good working order.