



ABBEVILLE ROAD, SW4

£3,750 PCM

- Victorian conversion
- Kitchen breakfast room
- Walk in wardrobe
- Private garden
- Over 1100 sqft
- Energy rating: D



3



3



1



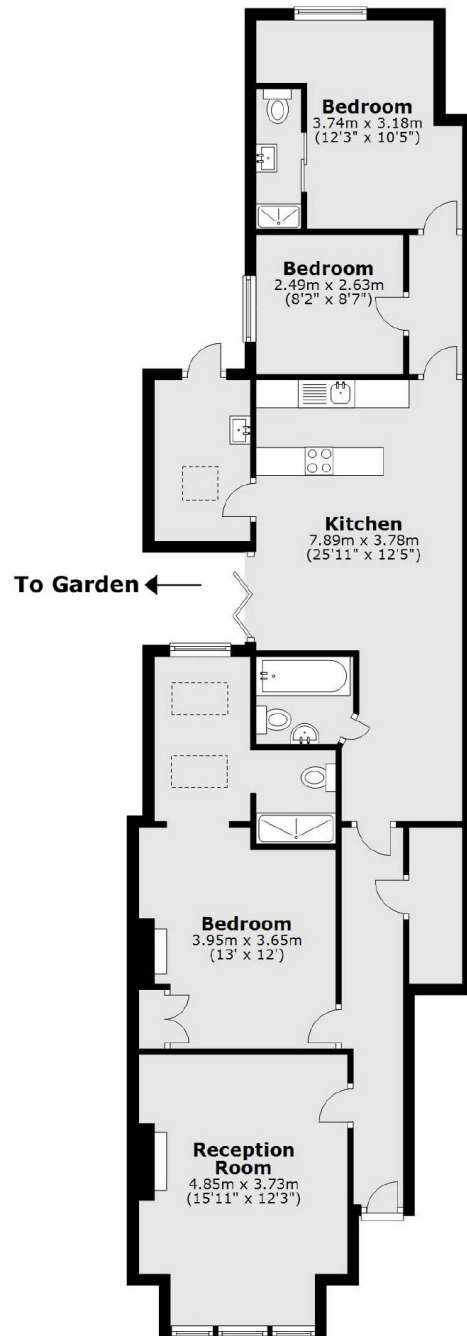
ABOUT THE HOME

A beautifully presented three bedroom maisonette in the ever popular Abbeville Village. Comprising of two large double bedrooms, a further study, kitchen breakfast room, spacious reception room and three bathrooms. It would be ideal for a couple or a family.

Abbeville Road boasts a number cafés, bars and restaurants and is only a short walk from Clapham Common and Clapham High Street.







Total area: approx. 104.8 sq. metres (1128.1 sq. feet)

JACKSONS CLAPHAM

73 Abbeville Road, London,

SW4 9JN

Sales: 020 8487 3177

Lettings: 020 8487 3178

Energy Rating: We aim to make our particulars both accurate and reliable. However they are not guaranteed; nor do they form part of an offer or contract. If you require clarification on any points then please contact us, especially if you're traveling some distance to view. Please note that appliances and heating systems have not been tested and therefore no warranties can be given as to their good working order.