

THORNBURY ROAD, SW2

£615,000

- Period conversion
- Maisonette
- Two bedrooms
- Private garden
- Chain free
- Energy rating: D





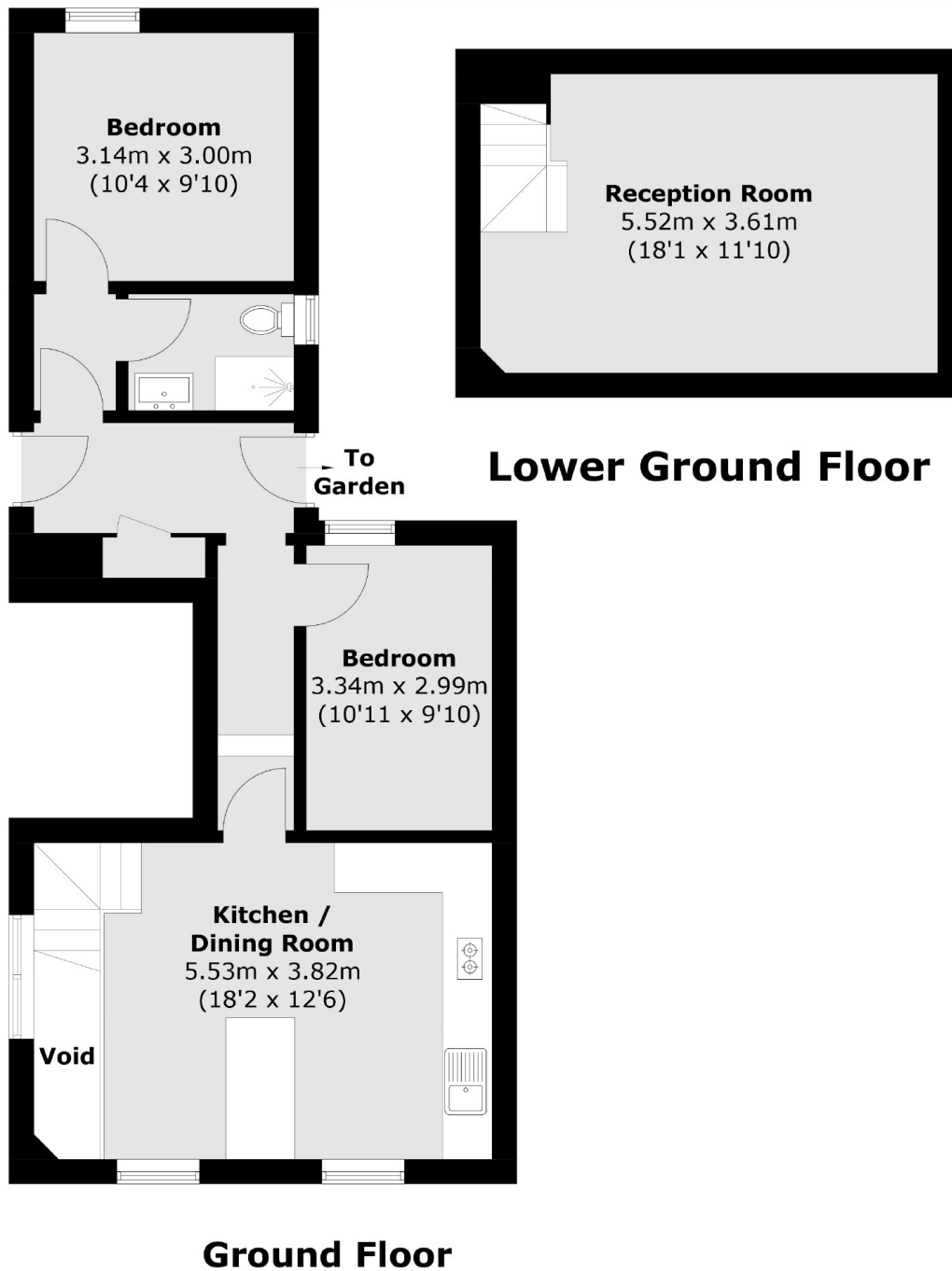
ABOUT THE HOME

A unique period converted two double bedroom, split level maisonette. This property is situated on a quiet residential road and benefits from having large living spaces and a private garden.

Thornbury Road, being directly off Kings Avenue, is convenient for access into Clapham and Brixton with a choice of tube stations at Clapham Common, Clapham North and Brixton. Abbeville Village is also close at hand with its array of independent shops, restaurants and bars.







Total area (approx.): 73.5 sq. m (791.2 sq. ft)

JACKSONS CLAPHAM

73 Abbeville Road, London,

SW4 9JN

Sales: 020 8487 3177

Lettings: 020 8487 3178

Energy Rating: D We aim to make our particulars both accurate and reliable. However they are not guaranteed; nor do they form part of an offer or contract. If you require clarification on any points then please contact us, especially if you're traveling some distance to view. Please note that appliances and heating systems have not been tested and therefore no warranties can be given as to their good working order.