



ELMS ROAD, SW4

£545,000

- Victorian conversion
- Two double bedrooms
- Private entrance
- Communal garden
- Chain free
- Energy rating: C





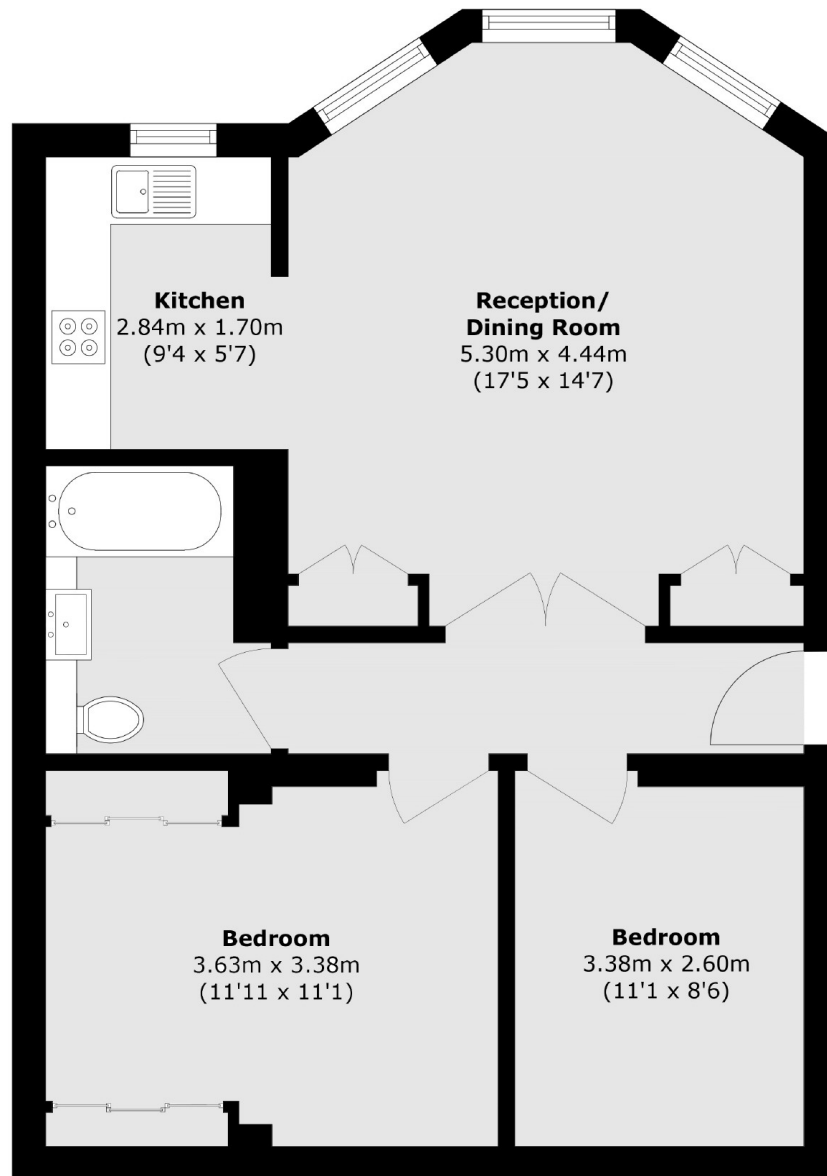
ABOUT THE HOME

A delightful two bedroom Victorian conversion flat located in the heart of Abbeville Village. The property benefits from its own entrance, South facing communal garden and is offered to the market chain free.

Elms Road is considered to be one of the most popular roads in Abbeville Village. Residents have easy access to the open expanses of Clapham Common and range of popular independent shops, bars and restaurants on Abbeville Road. There are also a number of public transport options including Clapham South Underground (Northern Line) and regular bus routes into the City.







Total area (approx.): 63.7 sq. m (685.6 sq. ft)

JACKSONS CLAPHAM

73 Abbeville Road, London,
SW4 9JN

Sales: 020 8487 3177

Lettings: 020 8487 3178

Energy Rating: C We aim to make our particulars both accurate and reliable. However they are not guaranteed; nor do they form part of an offer or contract. If you require clarification on any points then please contact us, especially if you're traveling some distance to view. Please note that appliances and heating systems have not been tested and therefore no warranties can be given as to their good working order.