



ELMS ROAD, SW4

£440,000

- One bedroom
- Own entrance
- Great condition
- Private patio
- Abbeville village
- Energy rating C



1



1



1



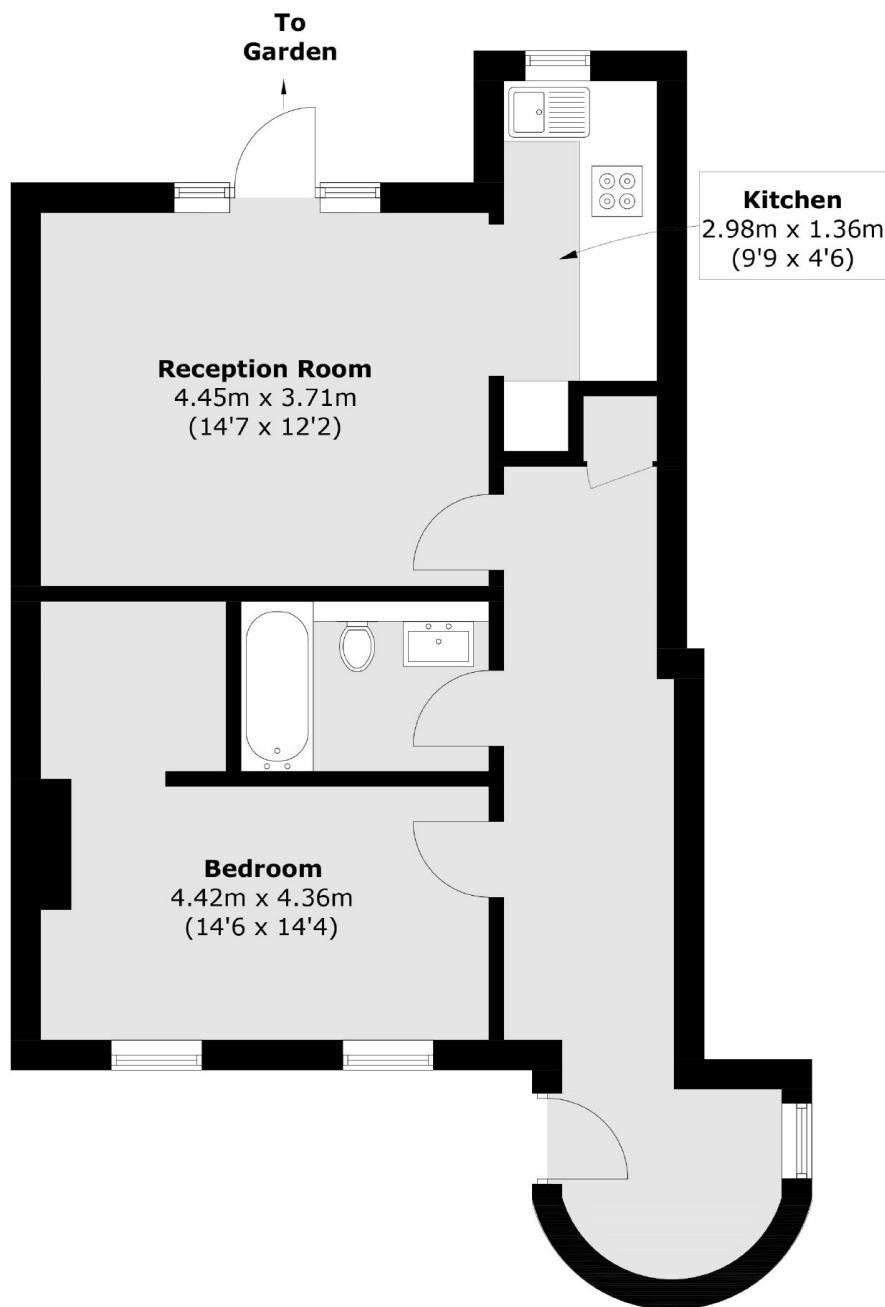
ABOUT THE HOME

A well presented and spacious one bedroom Victorian conversion flat on a sought after road in Abbeville Village. The property benefits from its own entrance way, a private south facing patio and also has access to a south facing communal garden.

Elms Road is considered to be one of the most popular roads in Abbeville Village. Residents have easy access to the open expanses of Clapham Common and range of popular independent shops, bars and restaurants on Abbeville Road. There are also a number of public transport options including Clapham South Underground (Northern Line) and regular bus routes into the City.







Total area (approx.): 57.4 sq. m (617.8 sq. ft)

JACKSONS CLAPHAM

73 Abbeville Road, London,

SW4 9JN

Sales: 020 8487 3177

Lettings: 020 8487 3178

Energy Rating: C We aim to make our particulars both accurate and reliable. However they are not guaranteed; nor do they form part of an offer or contract. If you require clarification on any points then please contact us, especially if you're traveling some distance to view. Please note that appliances and heating systems have not been tested and therefore no warranties can be given as to their good working order.