

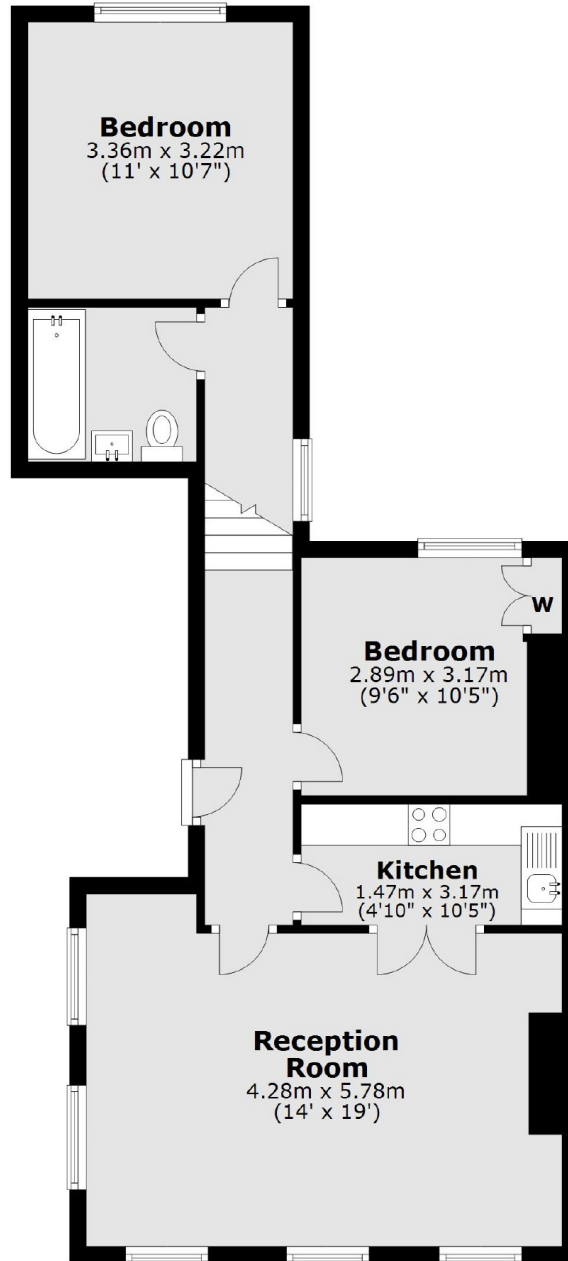


BATTERSEA RISE, SW11

£2,400 PCM

- Two bedrooms
- Good decorative order
- Open plan
- Close to Northcote Road
- Part furnished
- Energy rating: D



First Floor

Total area: approx. 60.9 sq. metres (655.2 sq. feet)

JACKSONS CLAPHAM

73 Abbeville Road, London,
SW4 9JN
Sales: 020 8487 3177
Lettings: 020 8487 3178

Energy Rating: D We aim to make our particulars both accurate and reliable. However they are not guaranteed; nor do they form part of an offer or contract. If you require clarification on any points then please contact us, especially if you're traveling some distance to view. Please note that appliances and heating systems have not been tested and therefore no warranties can be given as to their good working order.