



MANDALAY ROAD, SW4

£825,000

- Victorian maisonette
- Two Bedrooms
- Two Bathrooms
- Chain free
- Share of freehold
- Energy rating: D



2



2



1



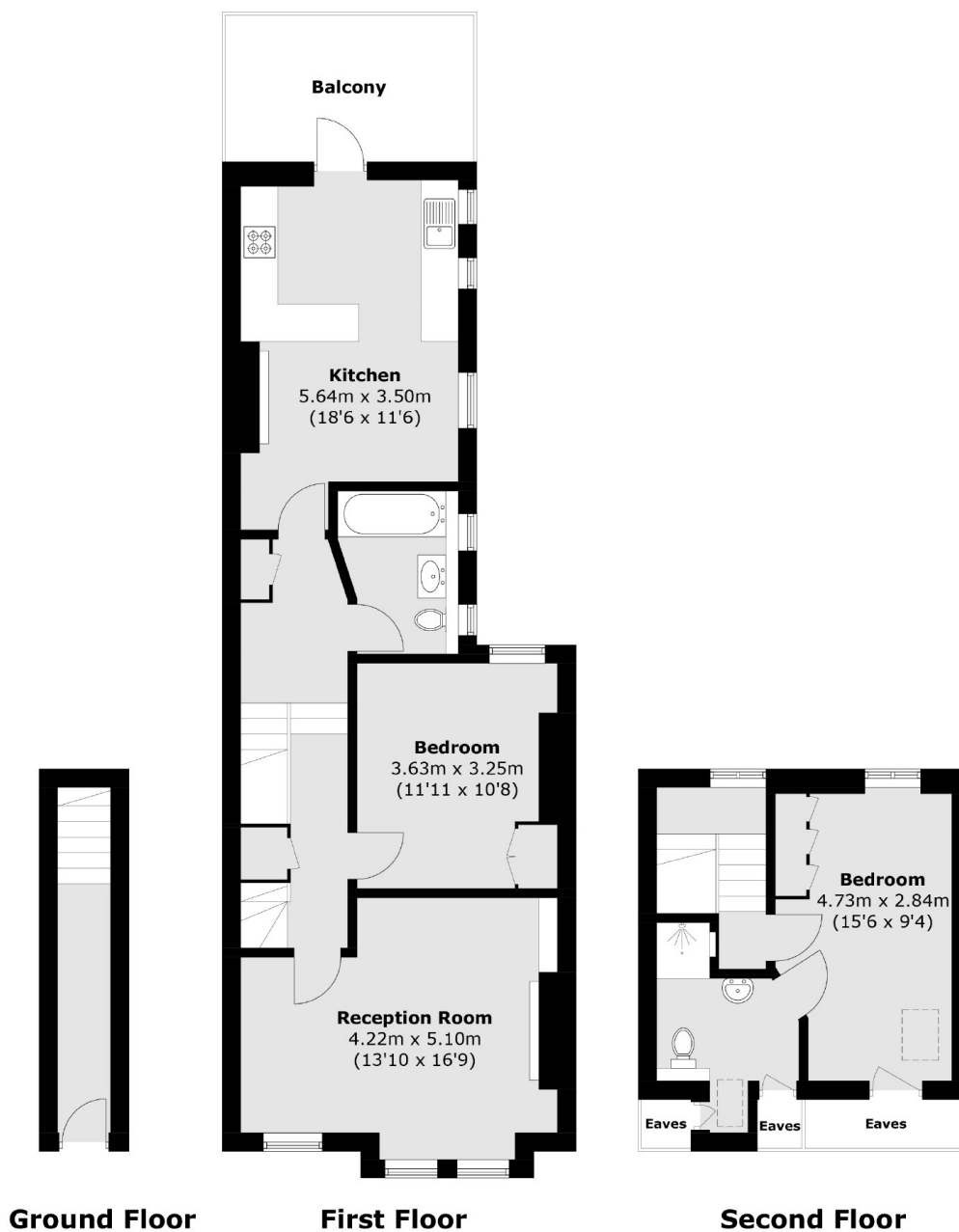
ABOUT THE HOME

A split level two bedroom, purpose-built Victorian maisonette, situated on a quiet residential in the centre of the Abbeville Village.

Mandalay is a quiet tree lined road located between Abbeville Road and Clapham Common. Residents have easy access to the parade of independent shops bars and restaurants of both Abbeville Village and Clapham Old Town. There are a number of transport link including Clapham South (Northern Line) and a number of regular bus routes into the City.







Total area (approx.): 95.0 sq. m (1,022.6 sq. ft)
(Excluding Eaves)
Balcony: 9.4 sq. m (101.2 sq. ft)

JACKSONS CLAPHAM

73 Abbeville Road, London,
SW4 9JN
Sales: 020 8487 3177
Lettings: 020 8487 3178

Energy Rating: D We aim to make our particulars both accurate and reliable. However they are not guaranteed; nor do they form part of an offer or contract. If you require clarification on any points then please contact us, especially if you're traveling some distance to view. Please note that appliances and heating systems have not been tested and therefore no warranties can be given as to their good working order.