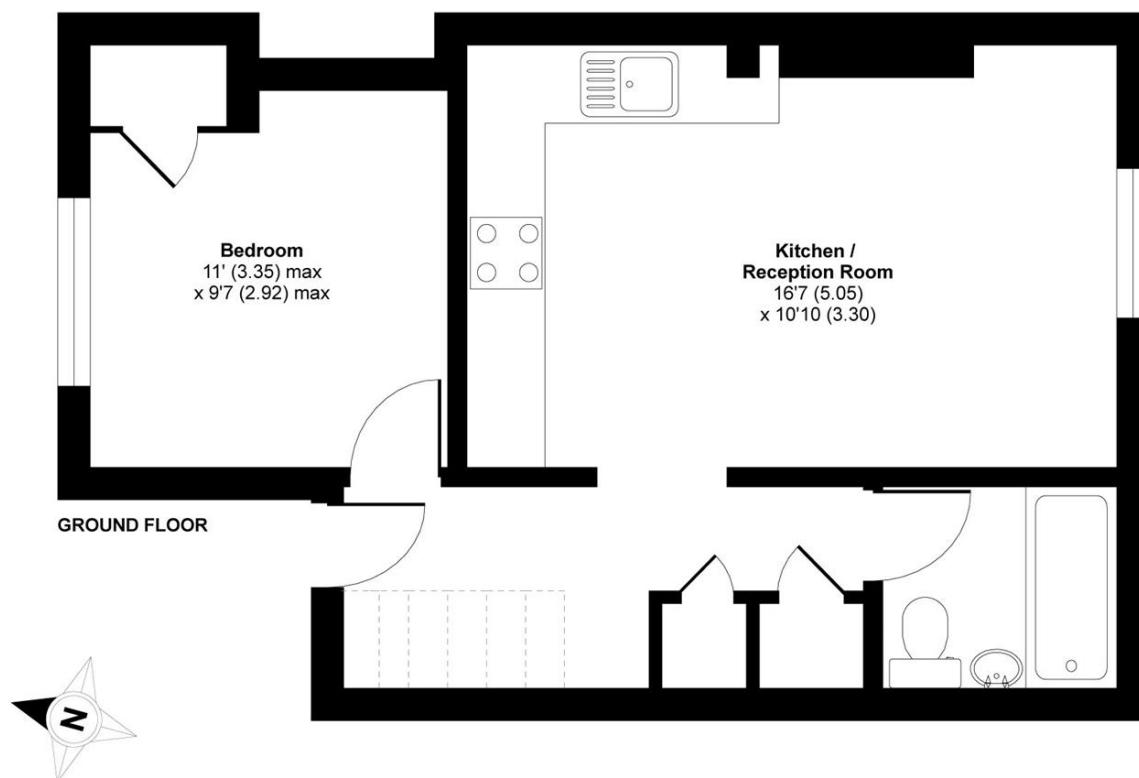


CLAPHAM PARK ROAD, SW4

£1,800 PCM

- Victorian conversion
- Ground floor
- Open plan reception
- One bedroom
- Furnished
- Energy rating: C





APPROX. GROSS INTERNAL FLOOR AREA 380 SQ FT 35.3 SQ METRES (EXCLUDES RESTRICTED HEAD HEIGHT)

Clapham Park Road, London, SW4

Copyright nichecom.co.uk 2015 Produced for Jacksons the Independent Estate Agents REF : 41728

JACKSONS CLAPHAM

73 Abbeville Road, London,

SW4 9JN

Sales: 020 8487 3177

Lettings: 020 8487 3178

Energy Rating: C We aim to make our particulars both accurate and reliable. However they are not guaranteed; nor do they form part of an offer or contract. If you require clarification on any points then please contact us, especially if you're traveling some distance to view. Please note that appliances and heating systems have not been tested and therefore no warranties can be given as to their good working order.