



LAMBOURN ROAD, SW4

£950,000

- Two double bedrooms
- Private entrance
- Clapham old town
- South west facing garden
- Chain free
- Energy rating: C



3



2



1



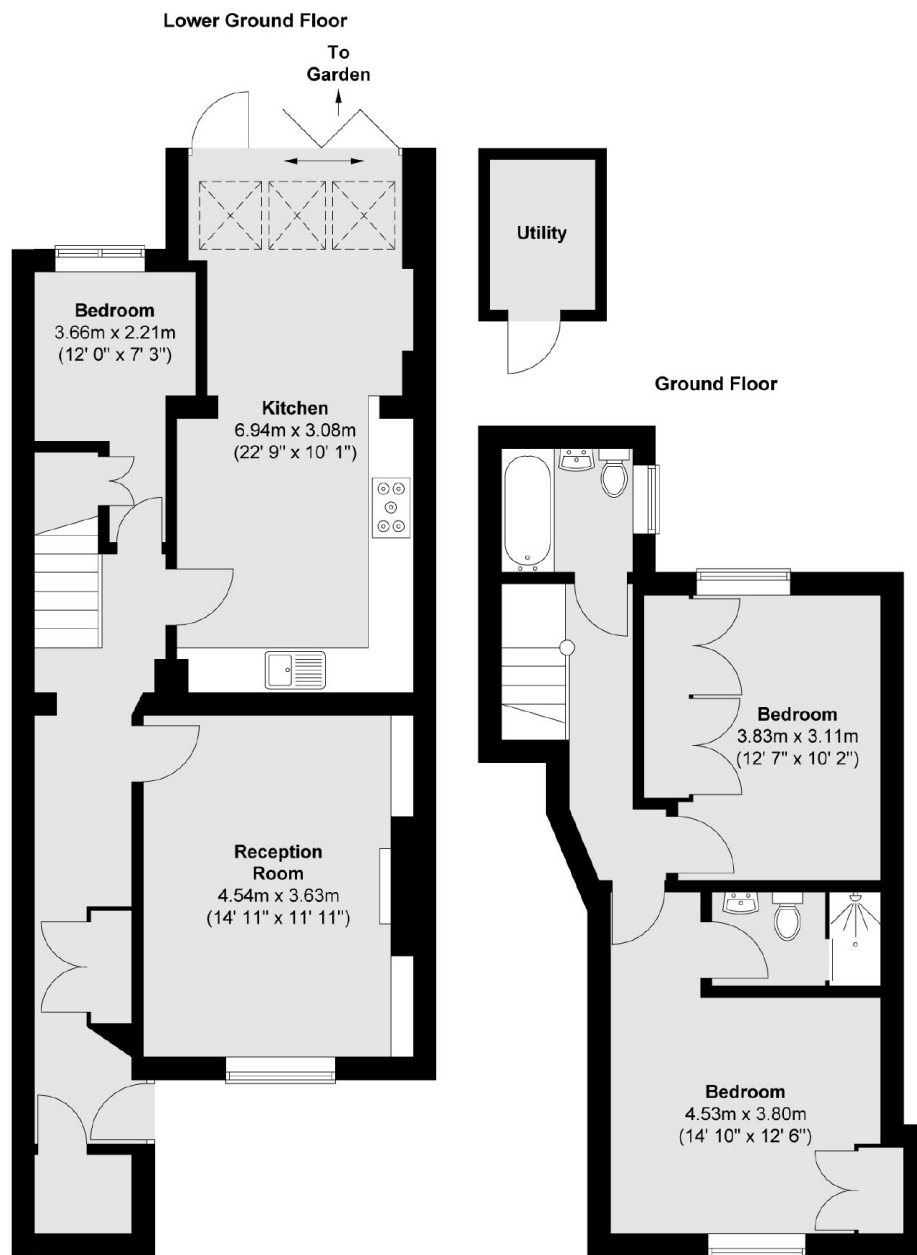
ABOUT THE HOME

A fantastic three bedroom split level garden flat set within an imposing period building.

Lambourn Road is located in Clapham Old Town, a highly desirable area renowned for its many shops, bars and restaurants. Clapham Common, along with its Underground station (Northern Line) and Wandsworth Road Overground station are a short distance away.







Total area (approx.) : 98.6 sq. m (1061 sq. ft)
Total utility area (approx.) : 2.8 sq. m (30 sq. ft)

JACKSONS CLAPHAM

73 Abbeville Road, London,
SW4 9JN
Sales: 020 8487 3177
Lettings: 020 8487 3178

Energy Rating: C We aim to make our particulars both accurate and reliable. However they are not guaranteed; nor do they form part of an offer or contract. If you require clarification on any points then please contact us, especially if you're traveling some distance to view. Please note that appliances and heating systems have not been tested and therefore no warranties can be given as to their good working order.