



## Poynders Road, SW4

£395,000

A spacious two bedroom purpose built apartment located a short distance away from Clapham Common. The flat benefits from a private balcony and is sold with no onward chain.

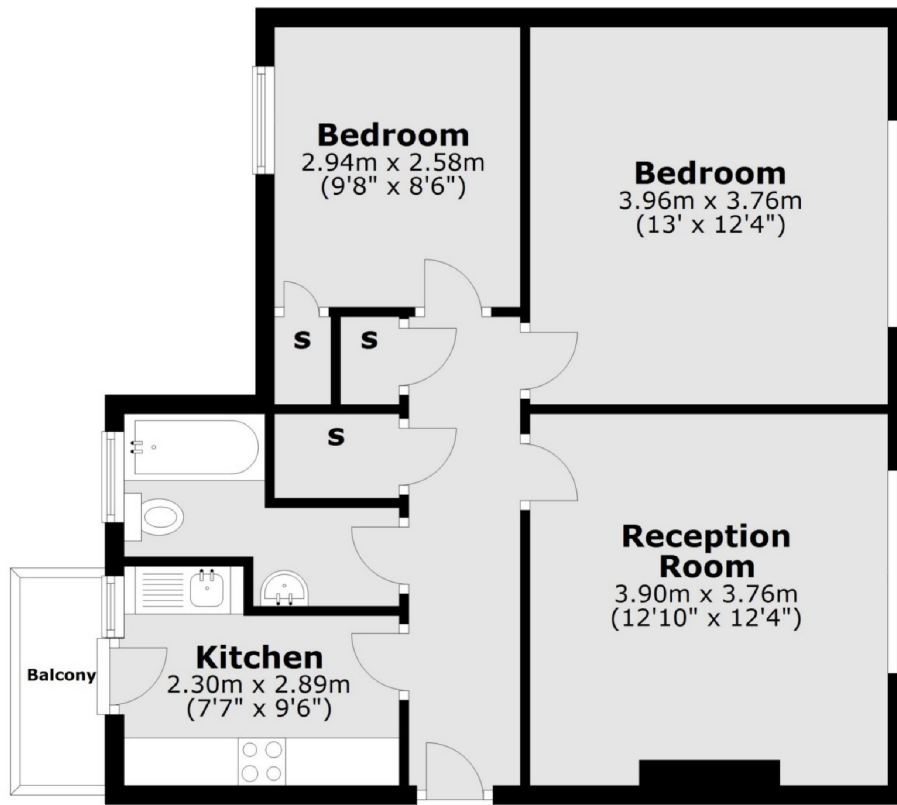
- Purpose Built
- Two Double Bedrooms
- Central Location
- Well Maintained
- Share Of Freehold
- No Onward Chain



Poynders Court is within a short walk of Clapham Common and Clapham South underground station, whilst many bus routes pass almost just outside the building. In addition the boutique shops, bars and restaurant's of Abbeville Village are also nearby.



### Third Floor



Main area: Approx. 57.1 sq. metres (614.7 sq. feet)

Plus balconies, approx. 1.9 sq. metres (21.0 sq. feet)

Jacksons Clapham  
73 Abbeville Road  
London  
SW4 9JN  
020 8875 7995  
[clapham.sales@jacksonsestateagents.com](mailto:clapham.sales@jacksonsestateagents.com)

Energy Rating: We aim to make our particulars both accurate and reliable. However they are not guaranteed; nor do they form part of an offer or contract. If you require clarification on any points then please contact us, especially if you're traveling some distance to view. Please note that appliances and heating systems have not been tested and therefore no warranties can be given as to their good working order.