



HARGWYNE STREET, SW9

£995,000

- Victorian
- Four bedrooms
- Two bathrooms
- Potential to extend
- South West garden
- Energy rating: D





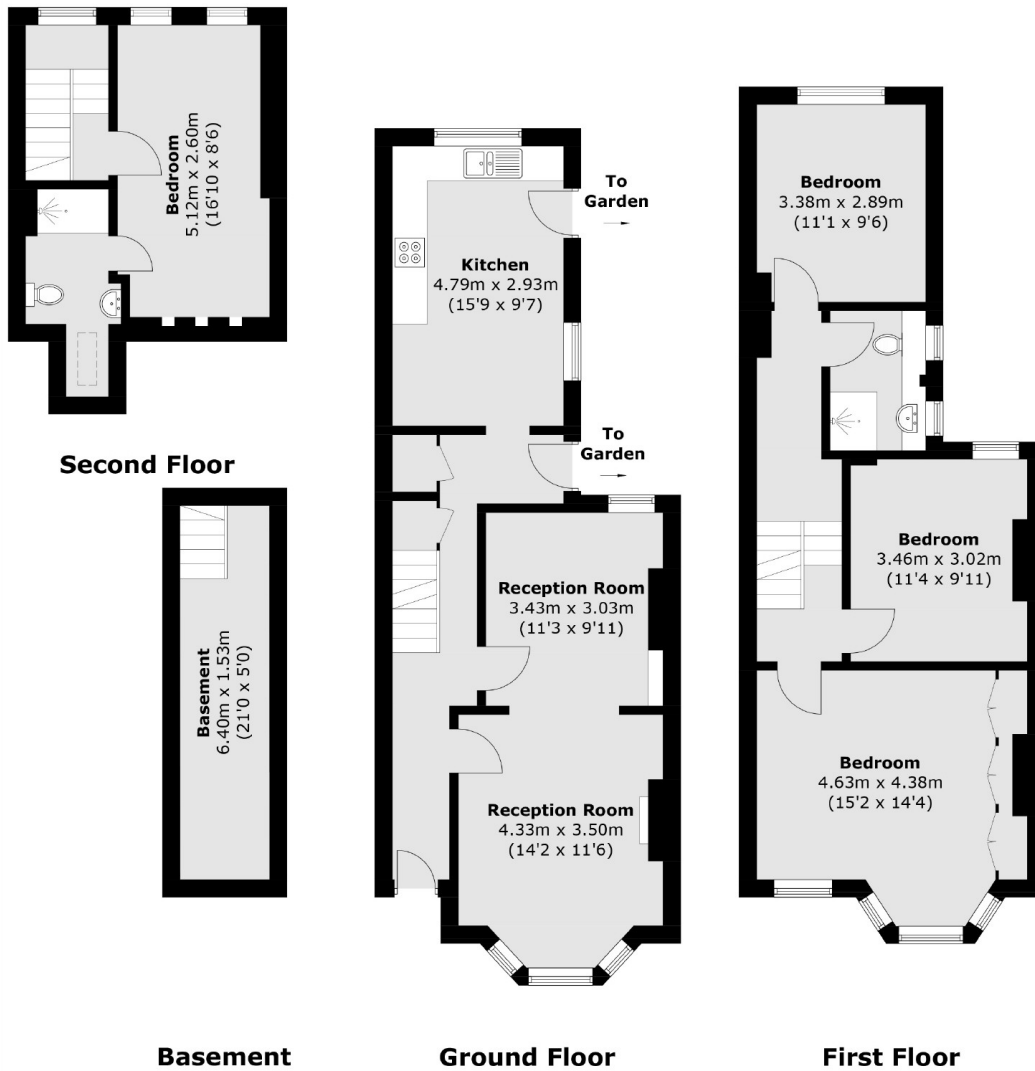
ABOUT THE HOME

A Victorian terraced house which has been in the same ownership for over 30 years, the property is well maintained and nicely presented throughout. It also benefits from a sunny South West facing garden and as potential to be extended into the side return (STPP).

Hargwyne Street, just off Landor Road, is a quiet, wide, residential road, 5 min walk to Clapham North Underground and a little further to Clapham High Street Overground station, Clapham Picture House, Clapham Old Town & Clapham Common. Bars, coffee shops, restaurants and other independent shops are close at hand on Landor Rd & Clapham High Street, with the property being less than a minute walk to the Old Post Office Bakery - the oldest organic bakery in London.







Total area (approx.): 136.1 sq. m (1,465 sq. ft)
(Including Basement)

JACKSONS CLAPHAM

73 Abbeville Road, London,

SW4 9JN

Sales: 020 8487 3177

Lettings: 020 8487 3178

Energy Rating: D We aim to make our particulars both accurate and reliable. However they are not guaranteed; nor do they form part of an offer or contract. If you require clarification on any points then please contact us, especially if you're traveling some distance to view. Please note that appliances and heating systems have not been tested and therefore no warranties can be given as to their good working order.