



STRATHLEVEN ROAD, SW2

£800,000

- Freehold house
- Three bedrooms
- Two Bathrooms
- Extended
- Garden
- Energy rating: C







## ABOUT THE HOME

A beautifully presented three bedroom terraced house located on a quiet residential road close to both Clapham and Brixton.

The property comprises; entrance hall with the square bay fronted living room to the left and to the right the wonderfully appointed kitchen/dining space with bi-folding doors to the low maintenance rear garden. To the first floor there are two bedrooms including the main bedroom with built in wardrobes and a family bathroom, to the second floor is another double bedroom with en-suite shower room.

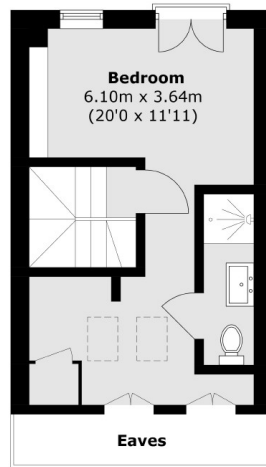
Strathleven Road is a residential, terraced street popular for its close proximity to both Brixton and Clapham town centres. Potential purchasers will benefit from the amenities in both areas, a few examples include the green open spaces of Brockwell Park and Clapham Common and all the fantastic restaurants, pubs and shops Clapham, Abbeville Village, and Brixton have to offer.



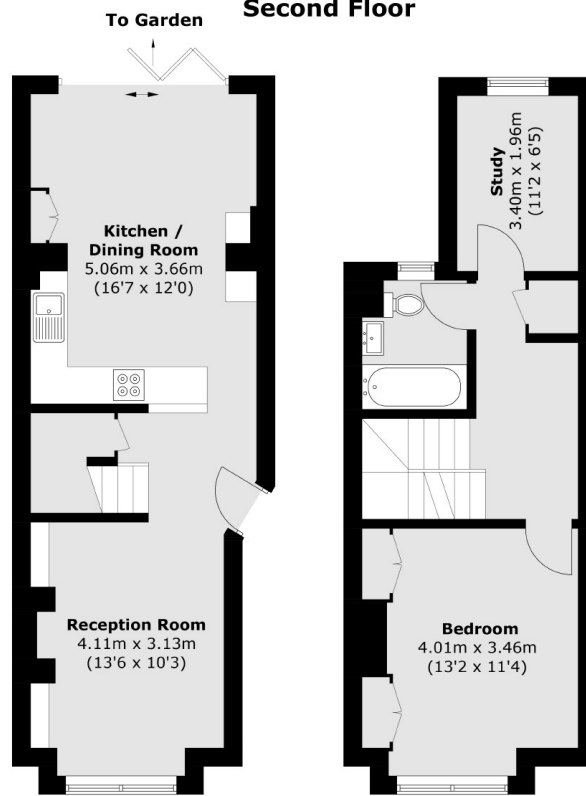








**Second Floor**



**Ground Floor**

**First Floor**

Total area (approx.): 93.9 sq. m (1,010.7 sq. ft)  
(Excluding Eaves)

### JACKSONS CLAPHAM

73 Abbeville Road, London,

SW4 9JN

Sales: 020 8487 3177

Lettings: 020 8487 3178

Energy Rating: C We aim to make our particulars both accurate and reliable. However they are not guaranteed; nor do they form part of an offer or contract. If you require clarification on any points then please contact us, especially if you're traveling some distance to view. Please note that appliances and heating systems have not been tested and therefore no warranties can be given as to their good working order.