



SOLON ROAD, SW2

£625,000

- Victorian conversion flat
- Two double bedrooms
- Excellent condition
- Private garden
- Share of freehold
- Energy rating: D



2



1



1



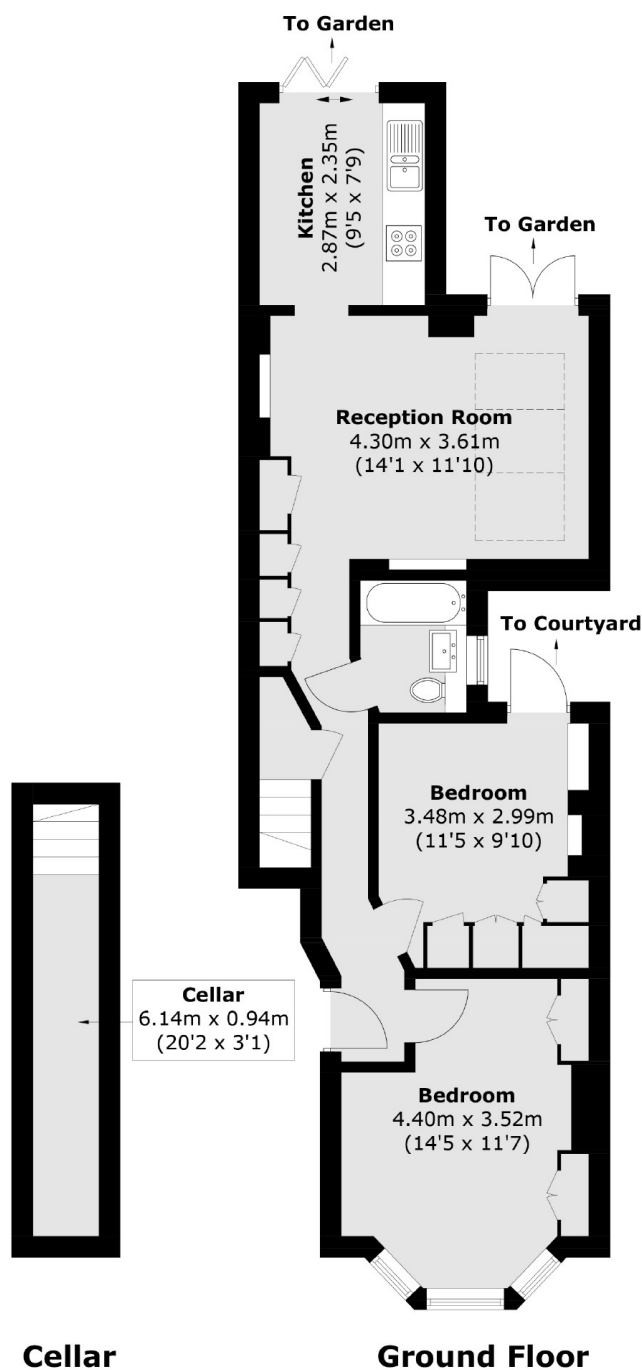
ABOUT THE HOME

A charming two bedroom Victorian garden flat situated between Clapham and Brixton. The property is in excellent condition and benefits from a basement for storage and a private garden.

Solon Road is located between Clapham and Brixton offering access to a wealth of amenities including the shops, bars and restaurants of Abbeville Village, Clapham Old Town and Brixton Market. Commuters have the choice between Clapham North (Northern), Brixton (Victoria), Clapham High Street (Overground) and a number of bus routes into the City.







Total area (approx.): 66.7 sq. m (717.9 sq. ft)
(Including Cellar)

JACKSONS CLAPHAM

73 Abbeville Road, London,

SW4 9JN

Sales: 020 8487 3177

Lettings: 020 8487 3178

Energy Rating: We aim to make our particulars both accurate and reliable. However they are not guaranteed; nor do they form part of an offer or contract. If you require clarification on any points then please contact us, especially if you're traveling some distance to view. Please note that appliances and heating systems have not been tested and therefore no warranties can be given as to their good working order.