



## SAVOY MEWS, SW9

£1,250,000

- Gated development
- Off street parking
- Four bedrooms
- Four bathrooms
- Chain free
- Energy rating: E





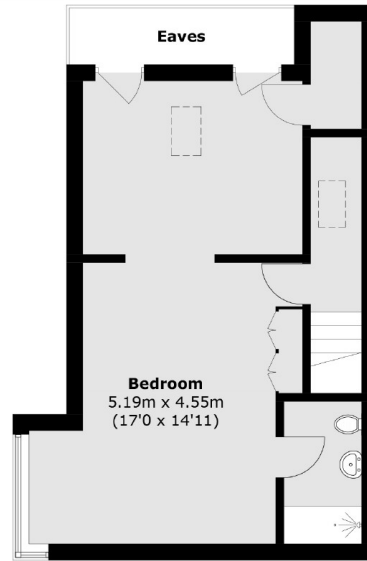
## ABOUT THE HOME

A spacious four bedroom modern house in a gated development just off Clapham Road. The property offers accommodation over three floors including a vast master suite with walk in wardrobe and en-suite on the top floor.

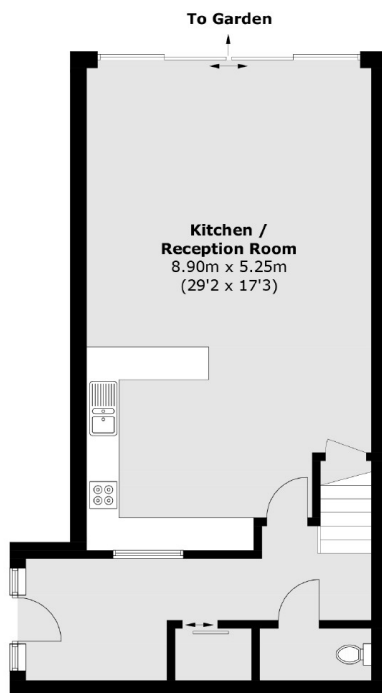
Savoy Mews is a secluded gated development located a short distance from Clapham High Street. Residents have easy access to a range of amenities from both Clapham High Street and Stockwell. There are a number of commuting options including Clapham North (Northern), Clapham High Street (Overground) and Stockwell (Victoria) all within walking distance. There are also a number of regular bus routes into the City.



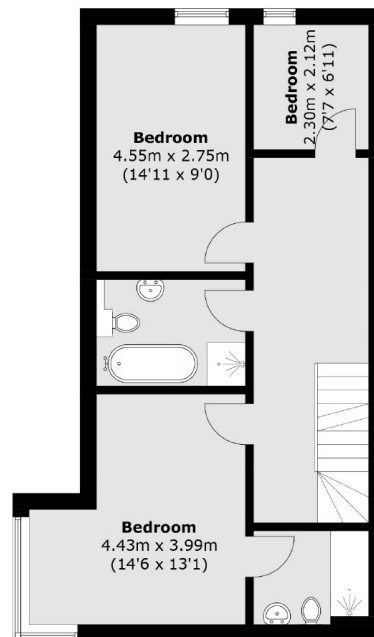




**Second Floor**



**Ground Floor**



**First Floor**

Total area (approx.): 168.1 sq. m (1809.4 sq. ft)  
(Excluding Eaves)

**JACKSONS CLAPHAM**

73 Abbeville Road, London,  
SW4 9JN  
Sales: 020 8487 3177  
Lettings: 020 8487 3178

Energy Rating: We aim to make our particulars both accurate and reliable. However they are not guaranteed; nor do they form part of an offer or contract. If you require clarification on any points then please contact us, especially if you're traveling some distance to view. Please note that appliances and heating systems have not been tested and therefore no warranties can be given as to their good working order.