



LYNETTE AVENUE, SW4

£725,000

- Three bedrooms
- Private garden
- Ground floor
- Abbeville village





ABOUT THE HOME

A three bedroom ground floor garden flat set within an imposing Victorian house, located in the Heart of Abbeville Village.

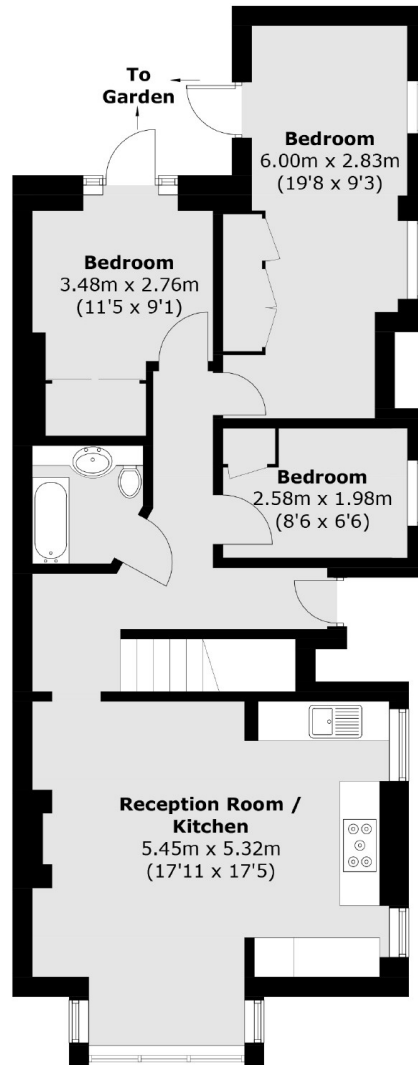
Cautley Avenue is conveniently located on the west side of Abbeville Village, equidistant between Clapham Common and Abbeville Road. Residents are spoilt for choice with easy access to the array of amenities in Abbeville and Clapham Old Town. Clapham South Underground is located very nearby as well as a number of regular bus routes into the City.







Lower Ground Floor



Ground Floor

Total area (approx.): 76.8 sq. m (826.6 sq. ft)

JACKSONS CLAPHAM

73 Abbeville Road, London,
SW4 9JN
Sales: 020 8487 3177
Lettings: 020 8487 3178

Energy Rating: D We aim to make our particulars both accurate and reliable. However they are not guaranteed; nor do they form part of an offer or contract. If you require clarification on any points then please contact us, especially if you're traveling some distance to view. Please note that appliances and heating systems have not been tested and therefore no warranties can be given as to their good working order.