



VOLTAIRE ROAD, SW4

£725,000

- Victorian maisonette
- Two bedrooms
- Two bathrooms
- Share of freehold
- Loft conversion potential
- Energy rating: D

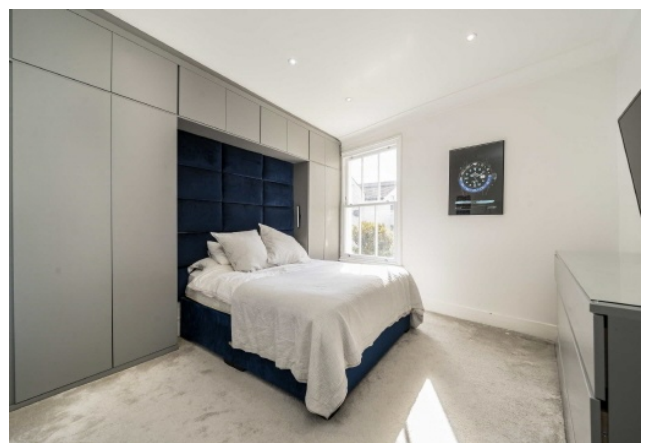




## ABOUT THE HOME

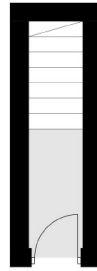
A stunning split level Victorian maisonette on a popular road in Clapham North. The property has been maintained to a very high standard but also offers scope for further potential with a large loft space that could be converted (subject to planning).

Voltaire Road is conveniently located on the borders of Clapham Old Town and Clapham North providing easy access to a range of amenities including a wide variety of shops, bars and restaurants. There are a number of commuting options including Clapham North (Northern) and Clapham High Street (Overground) and a number of regular bus routes into the City.

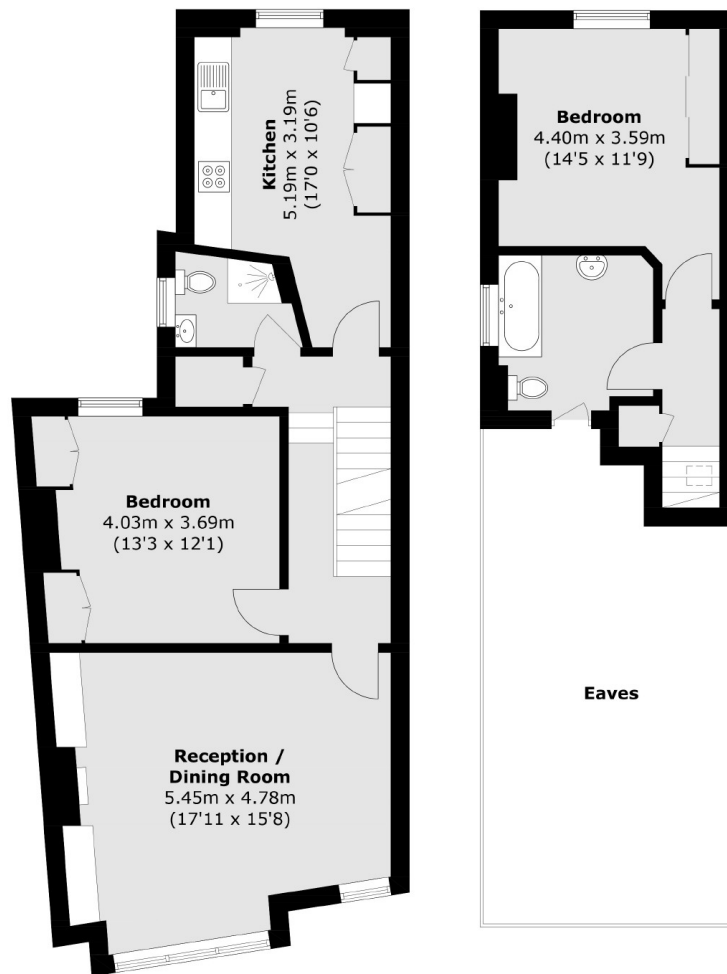








**Ground Floor**



**First Floor**

**Second Floor**

Total area (approx.): 93.5 sq. m (1,006.4 sq. ft)  
(Excluding Eaves)

**JACKSONS CLAPHAM**

73 Abbeville Road, London,  
SW4 9JN  
Sales: 020 8487 3177  
Lettings: 020 8487 3178

Energy Rating: We aim to make our particulars both accurate and reliable. However they are not guaranteed; nor do they form part of an offer or contract. If you require clarification on any points then please contact us, especially if you're traveling some distance to view. Please note that appliances and heating systems have not been tested and therefore no warranties can be given as to their good working order.