



BRADLEY ROAD, SW4

£675,000

- Purpose built
- Three double bedrooms
- Two bathrooms
- Parking Space
- Long Lease
- Energy rating: B



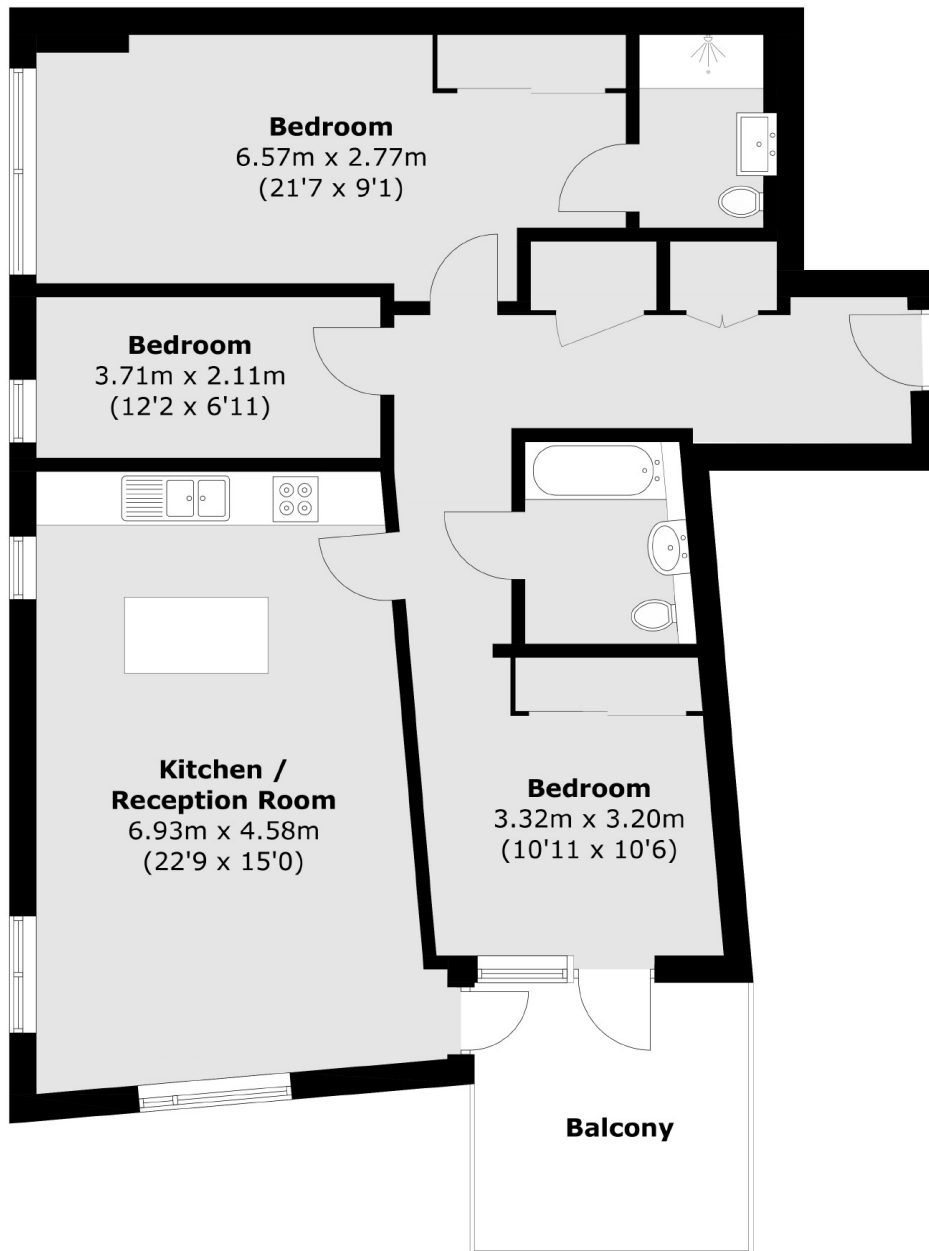
ABOUT THE HOME

A luxury three bedroom apartment in the Clapham Park development. The property has been finished to a very high standard and is available with no onward chain.

Bradley Road is located within the Clapham Park development just off Kings Avenue. Residents have access to a number of amenities including the shops, bars and restaurants of Abbeville Village and Clapham High Street. There are a number of commuting options including Clapham South, Clapham Common and a number of regular bus routes into the City.







Third Floor

Total area (approx.): 88.6 sq. m (953.7 sq. ft)
Balcony: 9.0 sq. m (96.8 sq. ft)

JACKSONS CLAPHAM

73 Abbeville Road, London,
SW4 9JN
Sales: 020 8487 3177
Lettings: 020 8487 3178

Energy Rating: B We aim to make our particulars both accurate and reliable. However they are not guaranteed; nor do they form part of an offer or contract. If you require clarification on any points then please contact us, especially if you're traveling some distance to view. Please note that appliances and heating systems have not been tested and therefore no warranties can be given as to their good working order.