



## CAVENDISH GARDENS, SW4

£775,000

- Victorian property
- Three bedrooms
- Private garden
- Share of freehold
- Chain free
- Energy rating: C





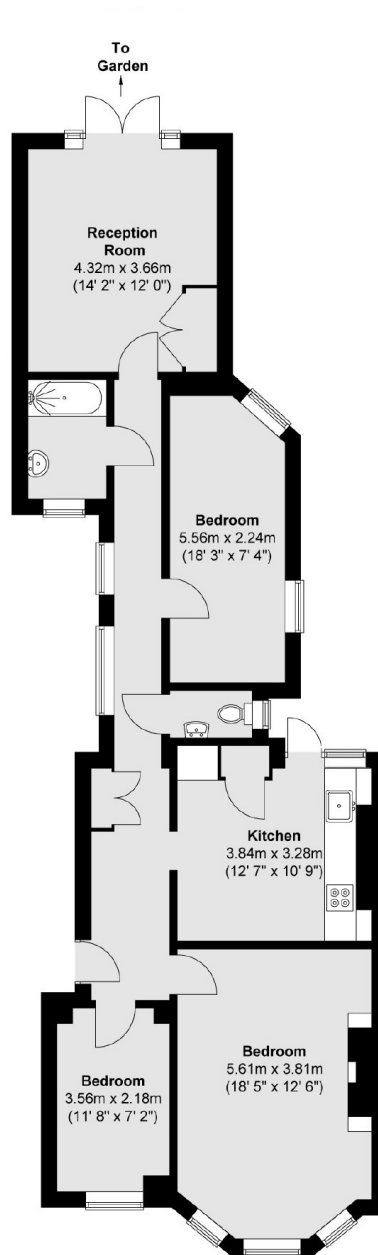
## ABOUT THE HOME

A charming three bedroom ground floor flat with private garden. The property is sold with a share of the freehold and is available with no onward chain.

Cavendish Gardens is a Victorian mansion flat development located just off Trouville Road in the heart of Abbeville Village. Residents find themselves walking distance from the parade of shops, bars and restaurants of Abbeville Road and the open expanses of Clapham Common. There are a number of commuting options including Clapham South (Northern Line) and a number of regular bus routes into the City.







Total area (approx.) : 93.2 sq. m (1003 sq. ft)

### JACKSONS CLAPHAM

73 Abbeville Road, London,

SW4 9JN

Sales: 020 8487 3177

Lettings: 020 8487 3178

Energy Rating: We aim to make our particulars both accurate and reliable. However they are not guaranteed; nor do they form part of an offer or contract. If you require clarification on any points then please contact us, especially if you're traveling some distance to view. Please note that appliances and heating systems have not been tested and therefore no warranties can be given as to their good working order.