



LOUGHBOROUGH PARK, SW9

£625,000

- Victorian conversion
- Two double bedrooms
- Two bathrooms
- Large private garden
- Private entrance
- Energy rating: E





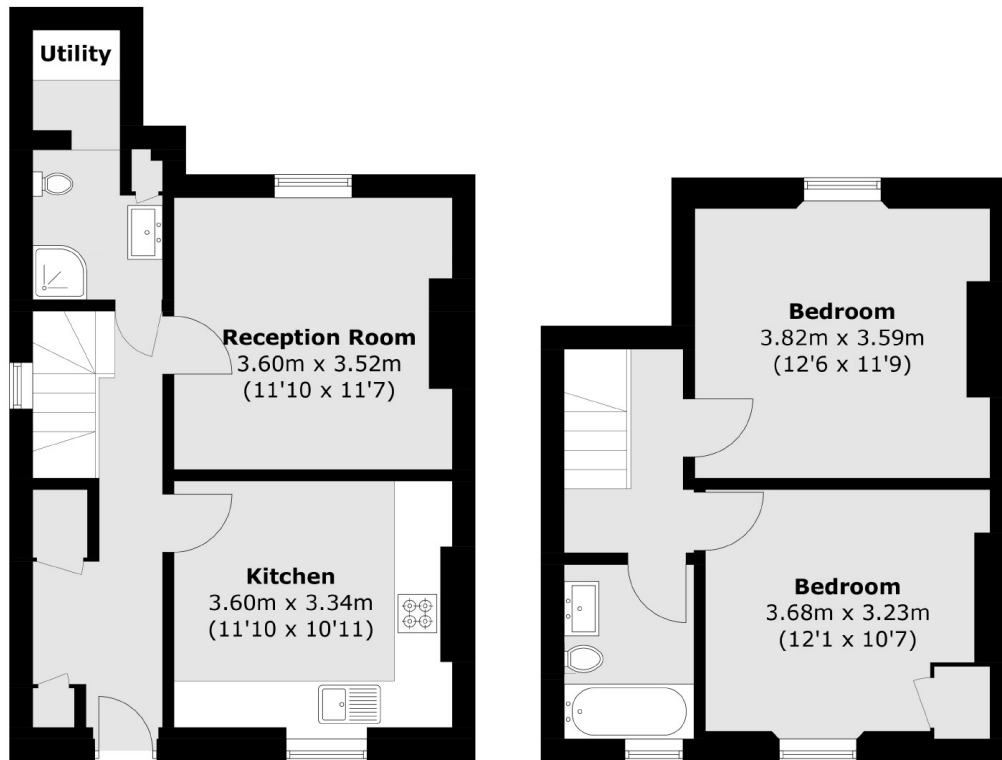
ABOUT THE HOME

A charming two bedroom split level Victorian conversion flat with large private garden.

Loughborough Park is a quiet residential road which runs between Loughborough Junction and Brixton. Residents have the ease of access to Brixton market, densely populated with an array of eateries of varying cuisines and cultures and the array of shops, bars and restaurants on Acre Lane. Brixton Underground (Victoria) and Loughborough Junction is located within walking distance and Loughborough Park is practically on your door step.





**Lower Ground Floor****Ground Floor**

Total area (approx.): 76.1 sq. m (819.1 sq. ft)

JACKSONS CLAPHAM

73 Abbeville Road, London,
SW4 9JN
Sales: 020 8487 3177
Lettings: 020 8487 3178

Energy Rating: We aim to make our particulars both accurate and reliable. However they are not guaranteed; nor do they form part of an offer or contract. If you require clarification on any points then please contact us, especially if you're traveling some distance to view. Please note that appliances and heating systems have not been tested and therefore no warranties can be given as to their good working order.