



ALBION AVENUE, SW8

£400,000

- Grade II listing building
- Split level apartment
- Three double bedrooms
- Communal gardens
- Permitted parking
- Energy rating: D





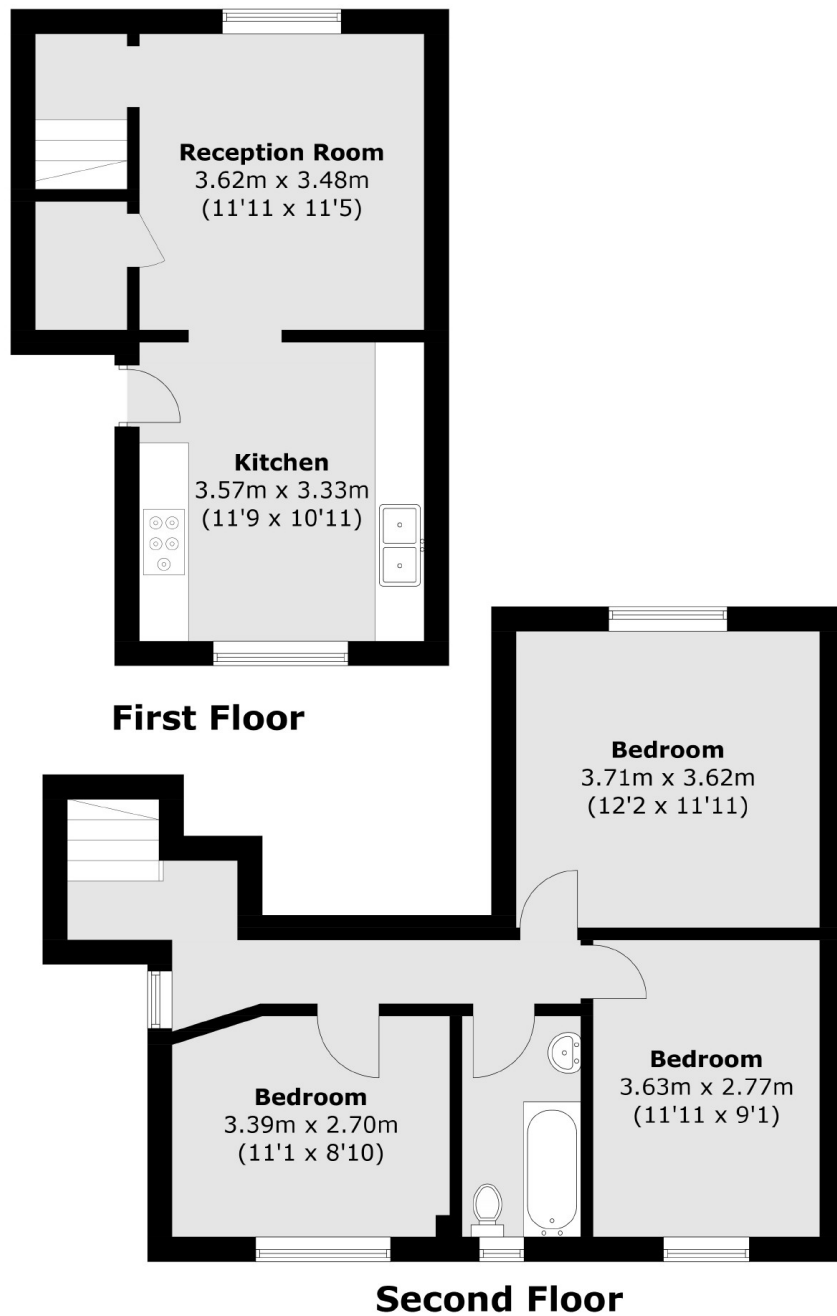
## ABOUT THE HOME

A spacious, three double bedroom purpose built apartment in a Grade II listed building. The property has been well maintained by the current owners and has a large communal garden.

Lucas House is a Grade II listed building located on a private road in the Larkhall Estate. Residents are located a short walk from Wandsworth Road station and the green expanses of Larkhall Park. There are also a range of amenities located in the vicinity including the shops, bars and restaurants of the ever popular Little Portugal, Battersea Power Station & Nine Elms.







Total area (approx.): 76.0 sq. m (818.0 sq. ft)

#### JACKSONS CLAPHAM

73 Abbeville Road, London,

SW4 9JN

Sales: 020 8487 3177

Lettings: 020 8487 3178

Energy Rating: D We aim to make our particulars both accurate and reliable. However they are not guaranteed; nor do they form part of an offer or contract. If you require clarification on any points then please contact us, especially if you're traveling some distance to view. Please note that appliances and heating systems have not been tested and therefore no warranties can be given as to their good working order.