



Clarence Avenue, SW4

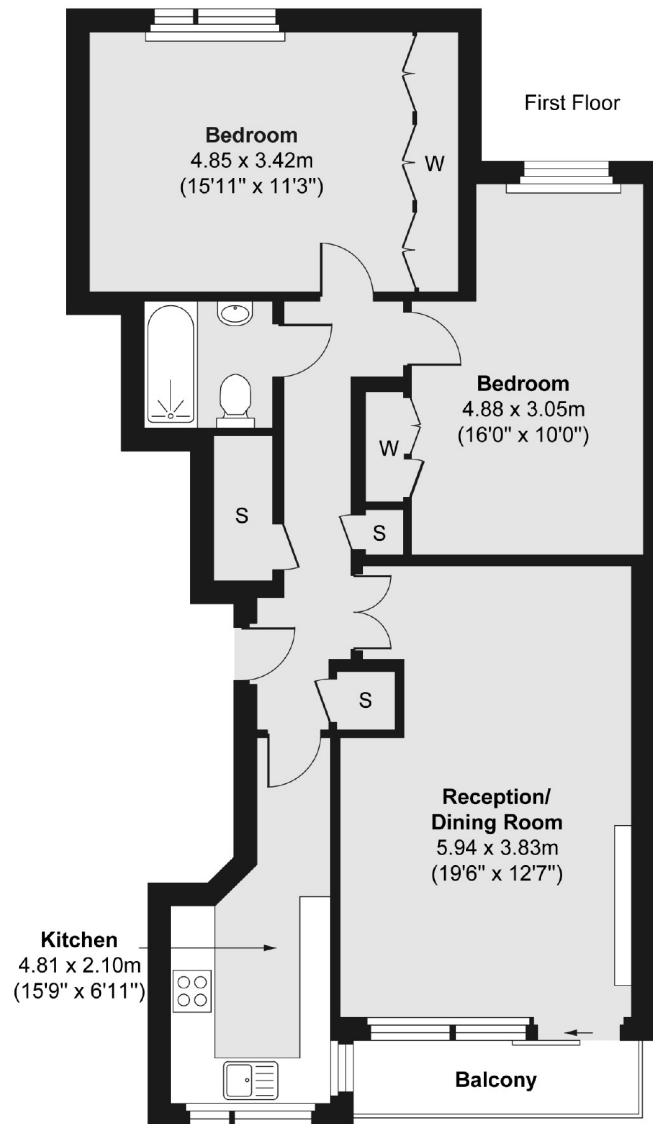
£2,000 PCM

This spacious first floor two double bedroom flat has, modern kitchen and bathroom, a large balcony, off street parking and access to a large communal garden.

Situated in a great location providing excellent access to Clapham Common underground (0.7 mile), Clapham North (0.9mile) and Brixton (1.2 miles). Clarence Avenue is even closer to Abbeville Village with its wide array of independent boutique shops, restaurants and coffee shops.

- Two Bedrooms
- First Floor Flat
- Private Balcony
- Modern Kitchen
- Communal Gardens
- Furnished

For further information on the costs associated with renting a property, please pop into our office or visit our website.



Total area (approx.) 75.54 sq. m (813 sq. ft)

Terrace area (approx.) 3.64 sq. m (39 sq. ft)

Jacksons Clapham
73 Abbeville Road
London
SW4 9JN
020 8875 7995
clapham.lettings@jacksonsestateagents.com

Energy Rating: We aim to make our particulars both accurate and reliable. However they are not guaranteed; nor do they form part of an offer or contract. If you require clarification on any points then please contact us, especially if you're traveling some distance to view. Please note that appliances and heating systems have not been tested and therefore no warranties can be given as to their good working order.