

PRIORY GROVE, SW8

£775,000

- School conversion
- Two double bedrooms
- Share of freehold
- No onward chain
- Gated parking
- Energy rating: E

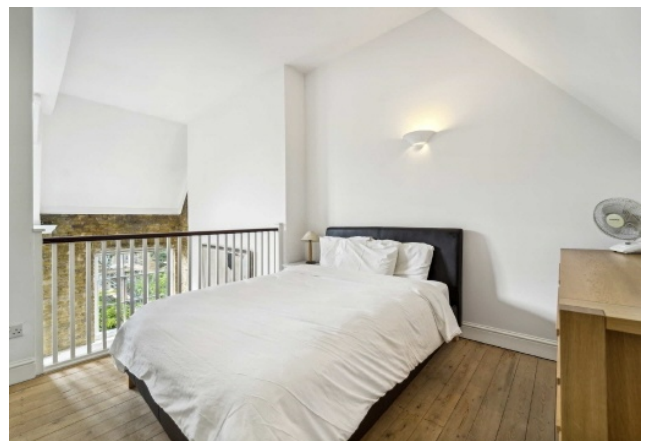




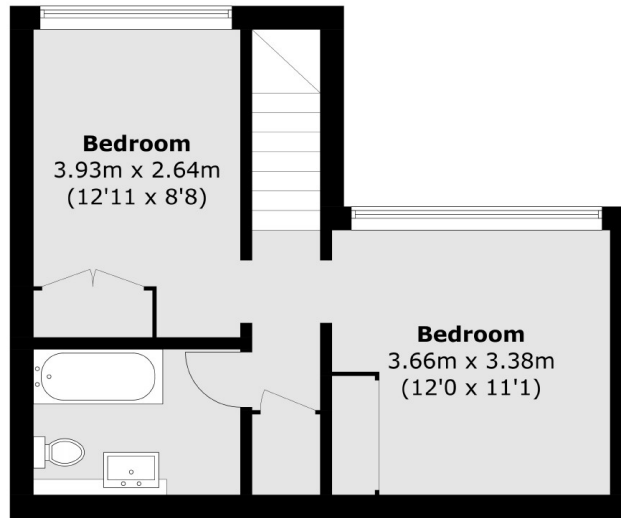
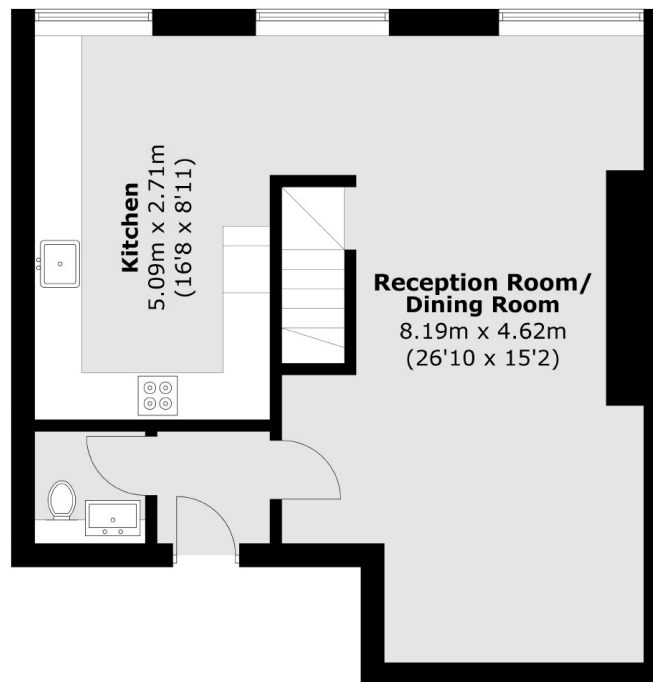
ABOUT THE HOME

A stunning loft style split level flat set within a Victorian school conversion with views over the London skyline.

Priory Grove is a quiet residential road which runs adjacent to the green spaces of Larkhall Park, with its outdoor gym and tennis courts. Clapham High Street, Brixton and the Iconic Battersea Power Station are within easy reach, providing a huge selection of restaurants, bars, cafes and shops. Excellent transport links include Victoria Line Underground services from Stockwell, Northern Line from Nine Elms and Overground services from Wandsworth Road.





**First Floor****Ground Floor**

Total area (approx.): 89.7 sq. m (965.5 sq. ft)

JACKSONS CLAPHAM

73 Abbeville Road, London,

SW4 9JN

Sales: 020 8487 3177

Lettings: 020 8487 3178

Energy Rating: We aim to make our particulars both accurate and reliable. However they are not guaranteed; nor do they form part of an offer or contract. If you require clarification on any points then please contact us, especially if you're traveling some distance to view. Please note that appliances and heating systems have not been tested and therefore no warranties can be given as to their good working order.