



IVELEY ROAD, SW4

£1,000,000

- Freehold
- Clapham old town
- South facing garden
- Off street parking
- Three bedrooms
- Energy rating: C





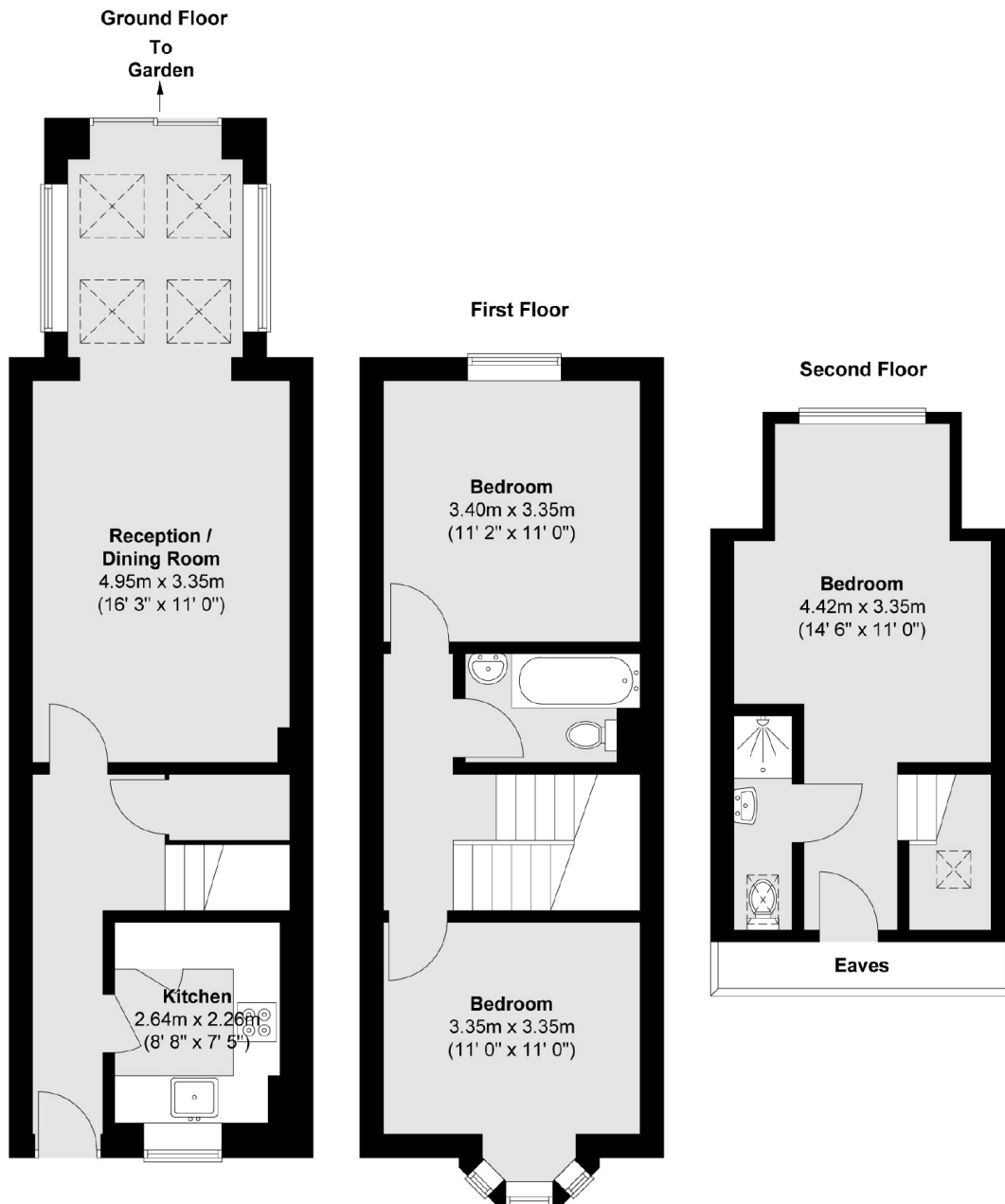
ABOUT THE HOME

A beautifully presented three double bedroom modern town house with a South facing garden and off street parking.

Iveley Road is a highly sought-after location in Clapham Old Town and is a stone's throw from the shops, cafés and restaurants of North Street and a short walk to the amenities of Clapham High Street and the open spaces of Clapham Common.







Total area (approx.) : 93.7 sq. m (1009 sq. ft)

JACKSONS CLAPHAM

73 Abbeville Road, London,
SW4 9JN
Sales: 020 8487 3177
Lettings: 020 8487 3178

Energy Rating: We aim to make our particulars both accurate and reliable. However they are not guaranteed; nor do they form part of an offer or contract. If you require clarification on any points then please contact us, especially if you're traveling some distance to view. Please note that appliances and heating systems have not been tested and therefore no warranties can be given as to their good working order.