



MANDALAY ROAD, SW4

£800,000

- Ground floor maisonette
- Two double bedrooms
- South facing garden
- Scope to extend
- Long lease
- Energy Rating: D





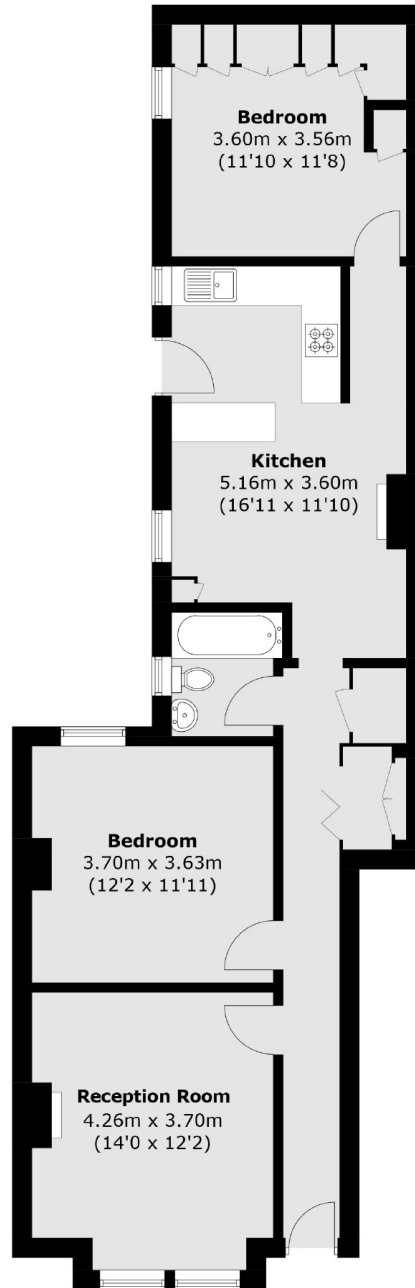
## ABOUT THE HOME

A charming two bedroom ground floor maisonette with a private south facing garden

Mandalay is a quiet tree lined road located between Abbeville Road and Clapham Common. Residents have easy access to the parade of independent shops bars and restaurants of both Abbeville Village and Clapham Old Town. There are a number of transport link including Clapham South (Northern Line) and a number of regular bus routes into the City.







Total area (approx.): 78.5 sq. m (845.0 sq. ft)

#### JACKSONS CLAPHAM

73 Abbeville Road, London,  
SW4 9JN

Sales: 020 8487 3177

Lettings: 020 8487 3178

Energy Rating: We aim to make our particulars both accurate and reliable. However they are not guaranteed; nor do they form part of an offer or contract. If you require clarification on any points then please contact us, especially if you're traveling some distance to view. Please note that appliances and heating systems have not been tested and therefore no warranties can be given as to their good working order.