



DOVERFIELD ROAD, SW2

£500,000

- First floor maisonette
- Kitchen/dining room
- Three double bedroom
- Original features
- Close to Brixton Station
- Energy rating: C





ABOUT THE HOME

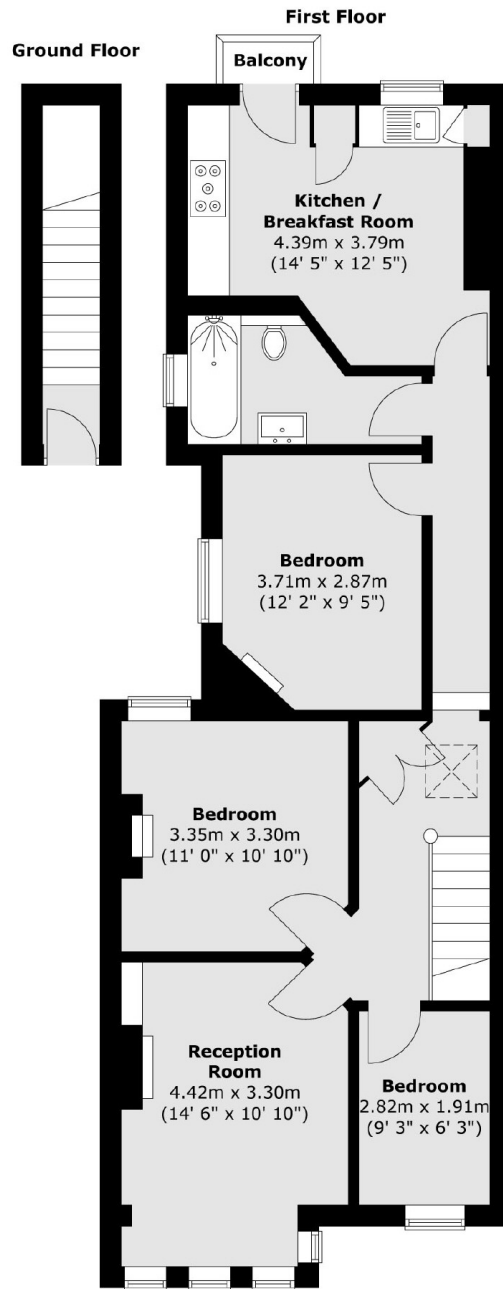
A tremendously light and spacious three bedroom first floor maisonette with many fine original features, offered to the market with no onward chain. Additionally the flat benefits with sole access to a large loft space which could be converted to an additional bedroom with en-suite as has been undertaken by several properties on the street (STPP).

Entered from street level via its own private front door the property comprises; entrance hall with useful storage cupboard, reception room, two large double bedrooms, one small double bedroom, contemporary, mainly tiled bathroom and modern fully fitted kitchen with space for dining.

Doverfield Road is located a mile from Brixton underground station (Victoria Line) and a mile from Clapham South underground station (Northern Line). There are also fantastic bus links from Brixton Hill which are a two minute walk away from the property. The bus to Brixton takes approximately 5 minutes and the bus to Clapham takes approximately 10 minutes.







Total area (approx.) : 81.7 sq. m (879 sq. ft)
 Total balcony area (approx.) : 0.9 sq. m (9 sq. ft)

JACKSONS CLAPHAM

73 Abbeville Road, London,
 SW4 9JN
 Sales: 020 8487 3177
 Lettings: 020 8487 3178

Energy Rating: We aim to make our particulars both accurate and reliable. However they are not guaranteed; nor do they form part of an offer or contract. If you require clarification on any points then please contact us, especially if you're traveling some distance to view. Please note that appliances and heating systems have not been tested and therefore no warranties can be given as to their good working order.