



TROUVILLE ROAD, SW4

£1,125,000

- Separate Living & Kitchen Space
- Two En-Suite Bedrooms
- Private garden
- Share of freehold
- 1,486 SqFt
- Energy rating: C





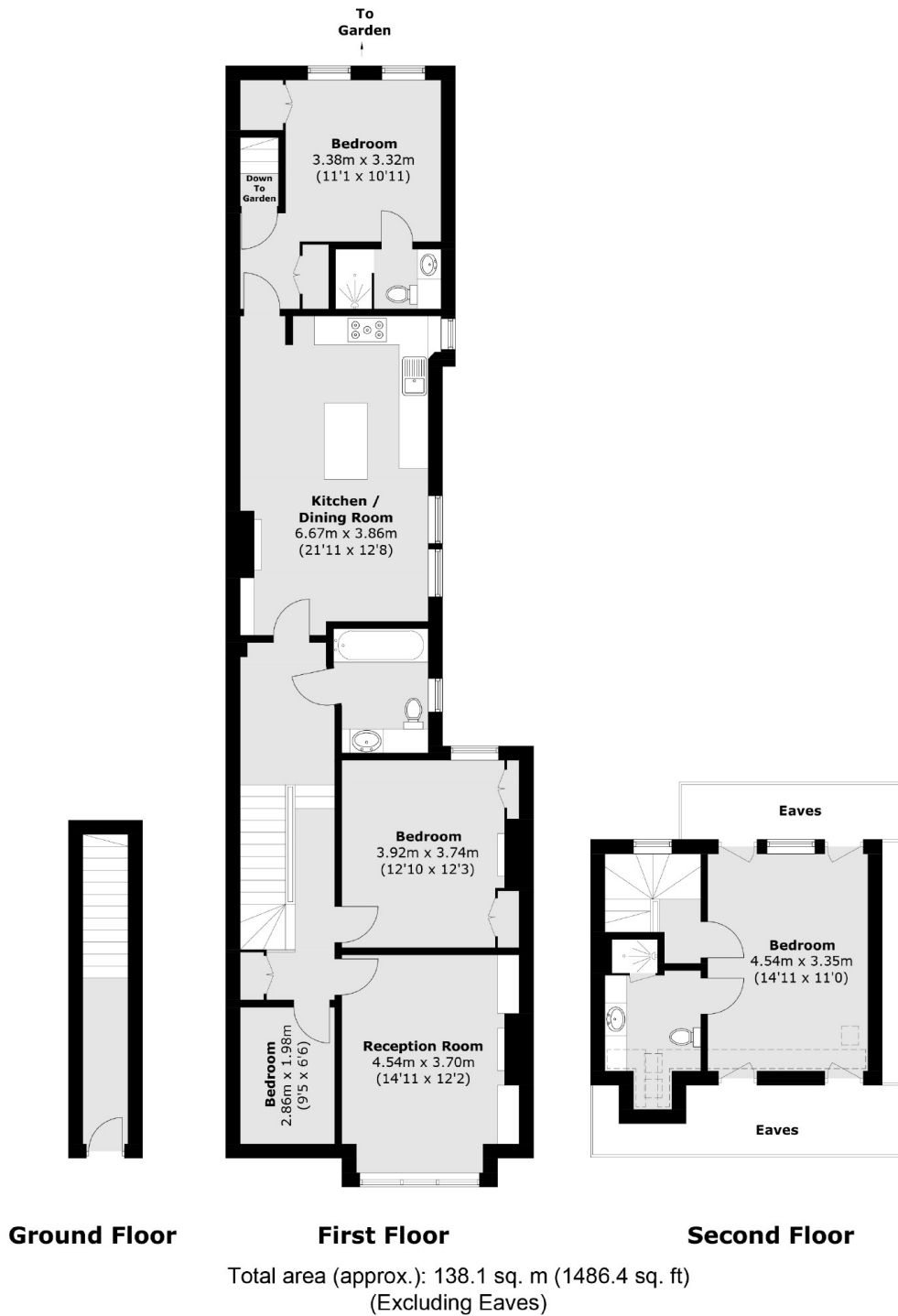
ABOUT THE HOME

*** Offers Over *** A spacious four bedroom split level Victorian maisonette with private garden on a popular road in Abbeville Village. The property has been maintained to a high standard by the current owners and offers 1486 SqFt of living space.

Trouville Road runs off the Western end of Abbeville Road with its comprehensive range of independent boutique shops, restaurants, bars and coffee shops, all strongly supported by the local community. Clapham South Northern Line Underground station (Zone 2) is only a short walk and numerous bus routes pass nearby. The open spaces of Clapham Common are also close at hand.







JACKSONS CLAPHAM

73 Abbeville Road, London,
SW4 9JN
Sales: 020 8487 3177
Lettings: 020 8487 3178

Energy Rating: C We aim to make our particulars both accurate and reliable. However they are not guaranteed; nor do they form part of an offer or contract. If you require clarification on any points then please contact us, especially if you're traveling some distance to view. Please note that appliances and heating systems have not been tested and therefore no warranties can be given as to their good working order.