



## HAMBALT ROAD, SW4

£950,000

- Victorian maisonette
- End of terrace
- Abbeville Village
- South facing balcony
- Long Lease
- Energy rating: D





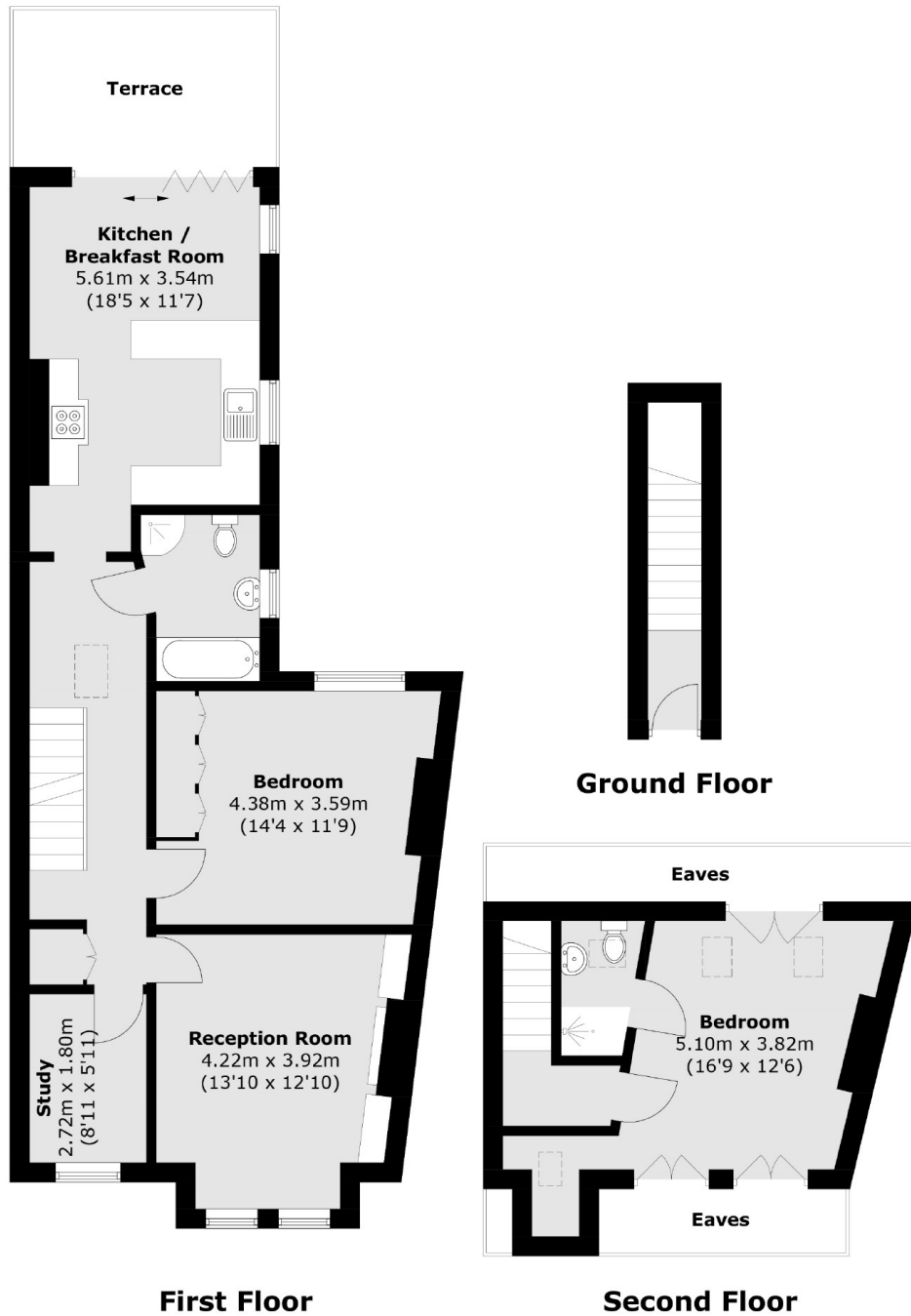
## ABOUT THE HOME

A stunning three bedroom split level Victorian maisonette in the heart of Abbeville Village. The property has been modernised to an immaculate standard and benefits from a south facing balcony.

Hambalt Road is a popular tree lined road in Abbeville Village equidistantly placed between the parade of shops bars and restaurants of Abbeville Road and Clapham Common. Residents have easy access to both Clapham South and Clapham Common Underground as well as a number of regular bus routes into the City.







Total area (approx.): 98.8 sq. m (1063.5 sq. ft)  
Terrace area (approx.): 9.8 sq. m (105.5 sq. ft)  
(Excluding Eaves)

### JACKSONS CLAPHAM

73 Abbeville Road, London,  
SW4 9JN  
Sales: 020 8487 3177  
Lettings: 020 8487 3178

Energy Rating: D We aim to make our particulars both accurate and reliable. However they are not guaranteed; nor do they form part of an offer or contract. If you require clarification on any points then please contact us, especially if you're traveling some distance to view. Please note that appliances and heating systems have not been tested and therefore no warranties can be given as to their good working order.