



Abbeville Road, SW4

£3,400 PCM

Jacksons are pleased to present this modern three bedroom ground floor maisonette which has been finished to a high standard throughout. The property is composed of separate reception room, three double bedrooms,

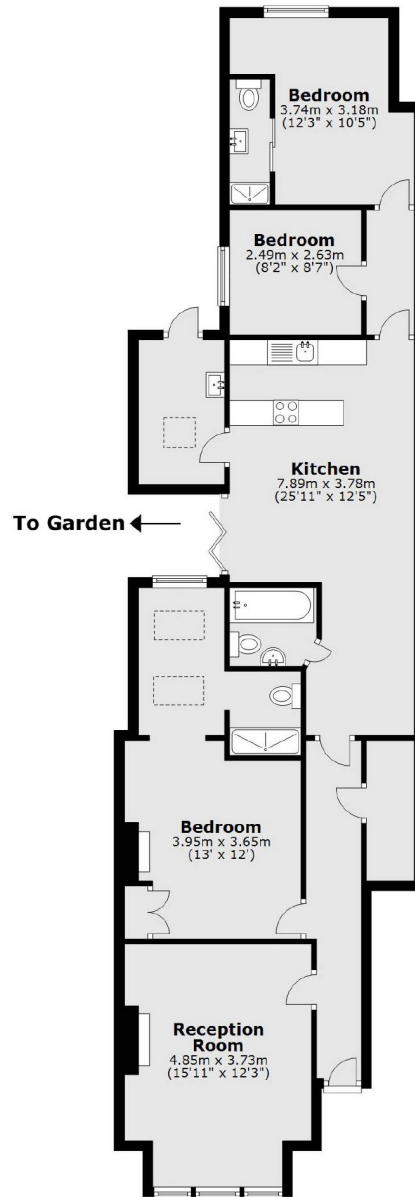
- Three Bedrooms
- Three Bathrooms
- Walk in Wardrobe
- Private Garden
- Large Kitchen Dining Space
- Modern Throughout

For further information on the costs associated with renting a property, please pop into our office or visit our website.



Abbeville Road boasts a number cafes, bars and restaurants and is only a short walk from Clapham Common and Clapham High Street. The property itself is located 0.6 miles from Clapham South underground station providing access to the Northern Line.





Total area: approx. 104.8 sq. metres (1128.1 sq. feet)

Jacksons Clapham
73 Abbeville Road
London
SW4 9JN
020 8875 7995
clapham.lettings@jacksonsestateagents.com

Energy Rating: We aim to make our particulars both accurate and reliable. However they are not guaranteed; nor do they form part of an offer or contract. If you require clarification on any points then please contact us, especially if you're traveling some distance to view. Please note that appliances and heating systems have not been tested and therefore no warranties can be given as to their good working order.