



HARGWYNE STREET, SW9

£1,450,000

- Victorian family home
- Four bedrooms
- Modernised throughout
- South West facing garden
- Large kitchen
- Energy rating: C





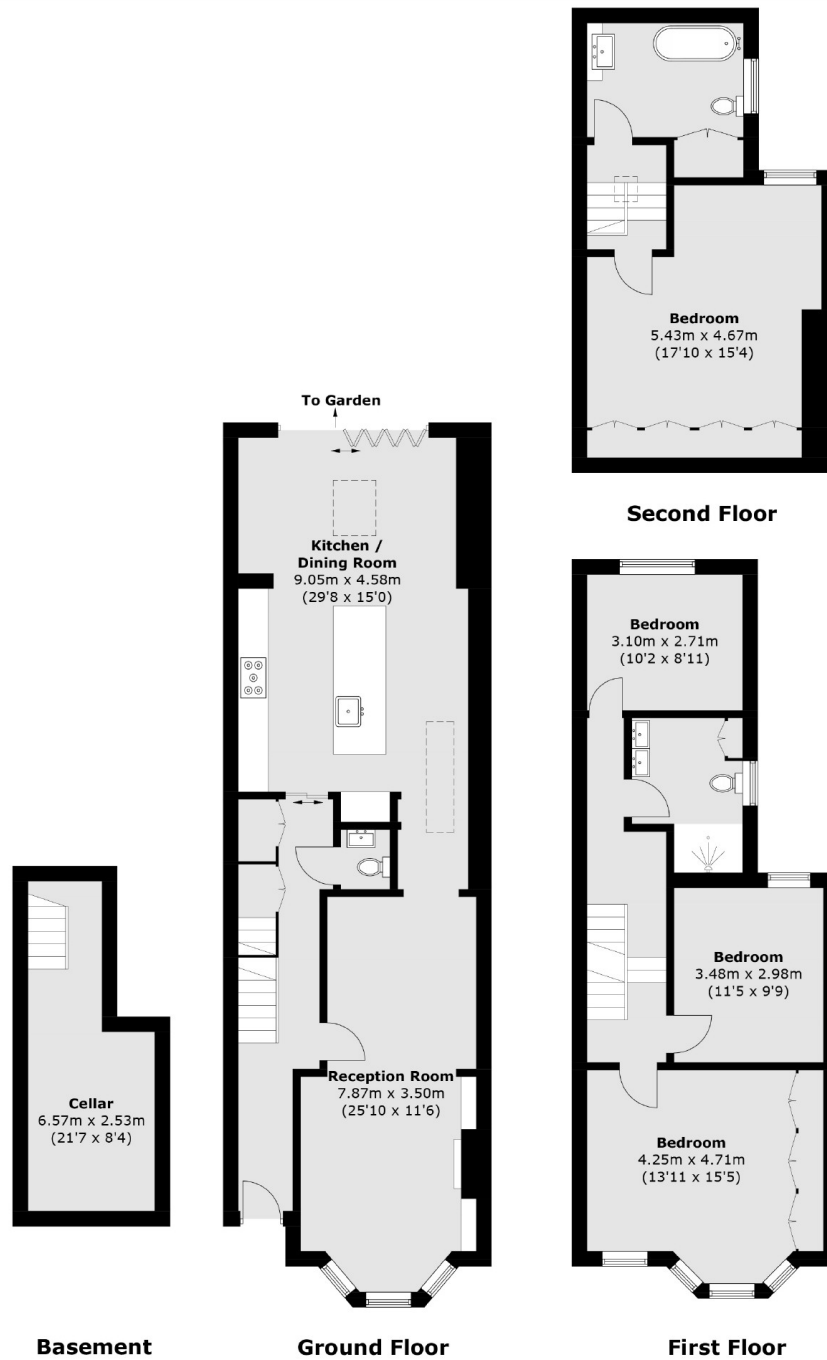
ABOUT THE HOME

A four bedroom Victorian family home which has been extended and modernised to exacting standards. The property benefits from a large kitchen diner with bi-folding doors leading out to a south west facing garden.

Hargwyne Street, just off Landor Road, is a quiet, wide, residential road, 5 min walk to Clapham North Underground and a little further to Clapham High Street Overground station, Clapham Picture House, Clapham Old Town & Clapham Common. Bars, coffee shops, restaurants and other independent shops are close at hand on Landor Rd & Clapham High Street, with the property being less than a minute walk to the Old Post Office Bakery - the oldest organic bakery in London.







Total area (approx.): 179.9 sq. m (1,936.4 sq. ft)

JACKSONS CLAPHAM

73 Abbeville Road, London,
SW4 9JN
Sales: 020 8487 3177
Lettings: 020 8487 3178

Energy Rating: C We aim to make our particulars both accurate and reliable. However they are not guaranteed; nor do they form part of an offer or contract. If you require clarification on any points then please contact us, especially if you're traveling some distance to view. Please note that appliances and heating systems have not been tested and therefore no warranties can be given as to their good working order.