



## Fairbourne Road, SW4

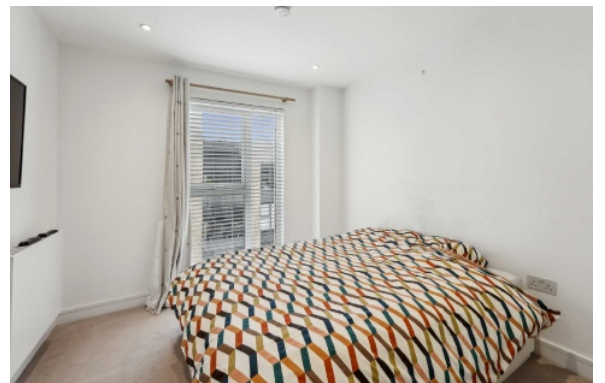
£640,000

A spacious two bedroom third floor apartment with balcony in a sought after location just off Kings Avenue.

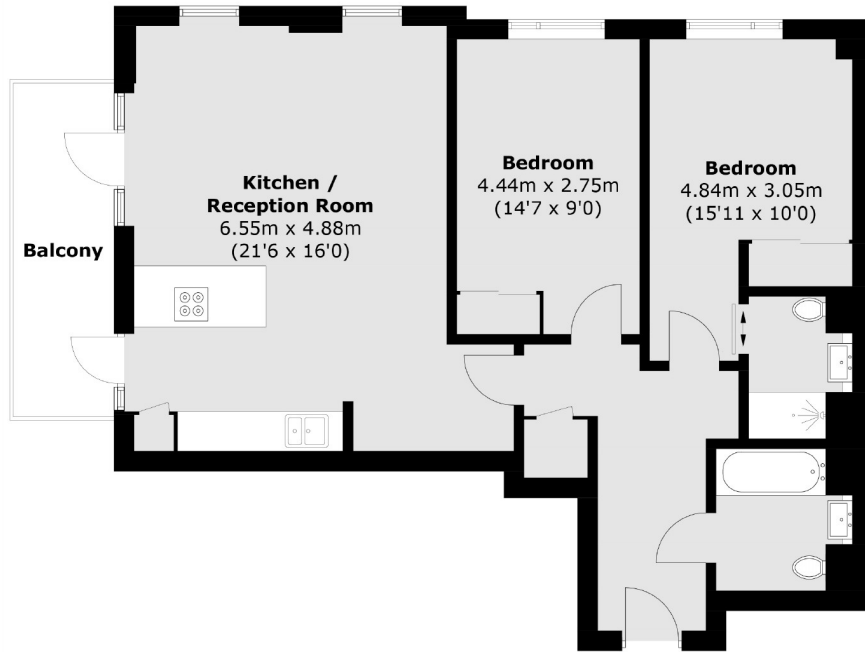
- Two Double bedroom
- Balcony
- High Spec Throughout
- Long Lease
- Underground Parking Available
- Immaculate Communal



Fairbourne Road is located on a new build development along the popular Kings Avenue within close proximity of the amenities and transport links local of Clapham South, Balham and Abbeville Village. Residents have access to a number of green spaces including Clapham Common & Tooting Bec.







Total area (approx.): 78.2 sq. m (841.7 sq. ft)  
Balcony: 7.6 sq. m (81.8 sq. ft)

Jacksons Clapham  
73 Abbeville Road  
London  
SW4 9JN  
020 8487 3177  
[clapham.sales@jacksonsestateagents.com](mailto:clapham.sales@jacksonsestateagents.com)

Energy Rating: We aim to make our particulars both accurate and reliable. However they are not guaranteed; nor do they form part of an offer or contract. If you require clarification on any points then please contact us, especially if you're traveling some distance to view. Please note that appliances and heating systems have not been tested and therefore no warranties can be given as to their good working order.