



Stonhouse Street, SW4

£780,000

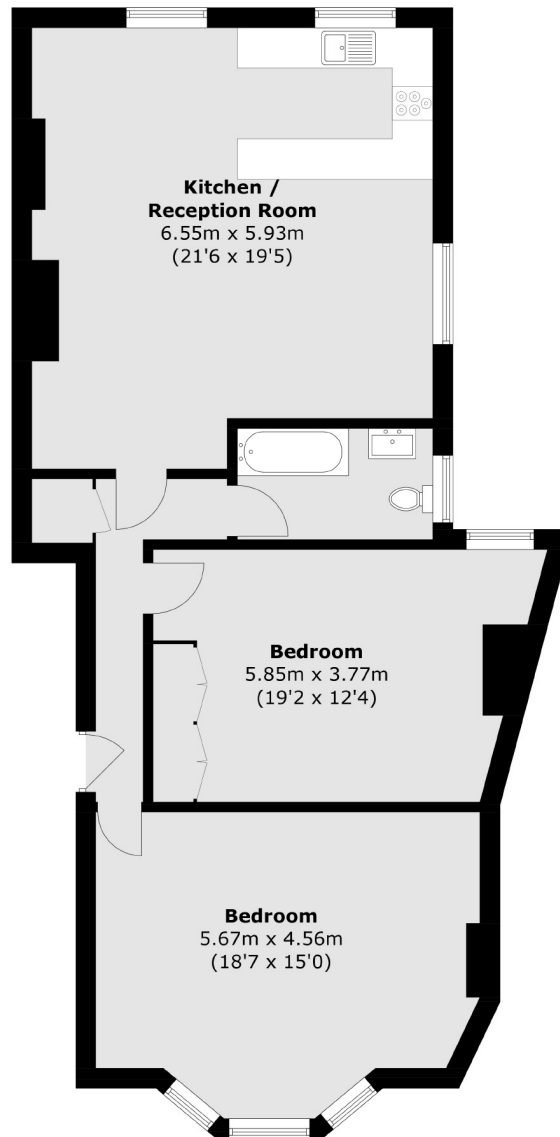
A spacious top floor Victorian mansion flat in Clapham Old Town. The property has two large bedrooms and benefits from 1004 SqFt of living space.

- Victorian Mansion Flat
- Two Double Bedrooms
- Top Floor
- 1004 SqFt
- Share Of Freehold
- Central Location



Stonhouse Street is conveniently located within Clapham Old Town and a short distance from Clapham Common. Residents have easy access to an array of shops, bars and restaurants including the michelin star restaurant Trinity. There are a range of transport links including Clapham Common (Northern Line), Clapham High Street (Overground) and a number of regular bus routes into the City.





Total area (approx.): 93.3 sq. m (1,004.3 sq. ft)

Jacksons Clapham
73 Abbeville Road
London
SW4 9JN
020 8875 7995
clapham.sales@jacksonsstateagents.com

Energy Rating: We aim to make our particulars both accurate and reliable. However they are not guaranteed; nor do they form part of an offer or contract. If you require clarification on any points then please contact us, especially if you're traveling some distance to view. Please note that appliances and heating systems have not been tested and therefore no warranties can be given as to their good working order.