



Dorothy Road, SW11

£895,000

A stunning Victorian maisonette with a roof terrace organised over three floors. The property has undergone a back to brick refurbishment with a meticulous level of attention to detail.

- Victorian Maisonette
- Three Bedrooms
- Three Bathrooms
- Share Of Freehold
- Modernised Throughout
- Roof Terrace



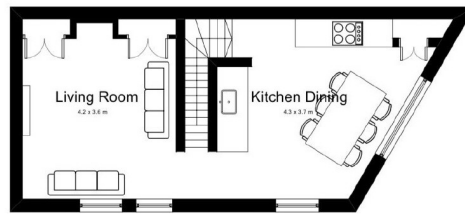
Dorothy Road is a quiet residential road located just a short distance from Clapham Junction. Residents have easy access to a wealth of amenities including the array of shops, bars and restaurants of Lavender Hill and Northcote Road as well as the open expanses of both Clapham Common & Battersea Park. There are a number of transport options including Clapham Junction and a number of bus routes into the City.



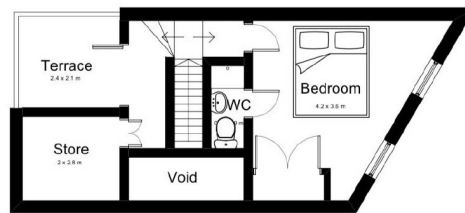




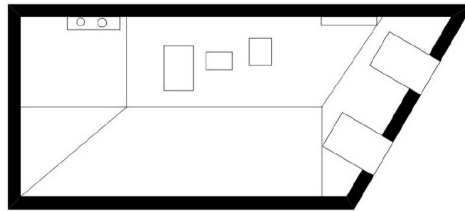
First Floor



Second Floor



Third Floor



Roof Plan

APPROX. GROSS INTERNAL FLOOR AREA 1252 SQ FT 116.3 SQ METRES

Dorothy Road, London, SW11

Jacksons Clapham
73 Abbeville Road
London
SW4 9JN
020 8875 7995
clapham.sales@jacksonsstateagents.com

Energy Rating: C We aim to make our particulars both accurate and reliable. However they are not guaranteed; nor do they form part of an offer or contract. If you require clarification on any points then please contact us, especially if you're traveling some distance to view. Please note that appliances and heating systems have not been tested and therefore no warranties can be given as to their good working order.