



Morval Road, SW2

£1,175,000

A simply stunning and bespoke three bedroom Victorian property redesigned and refurbished to exacting standards located at the base of The Poet's Corner.

- Victorian House
- Three Double Bedrooms
- Two Bathrooms
- Bespoke Architectural Design
- Dressing room
- Utility room

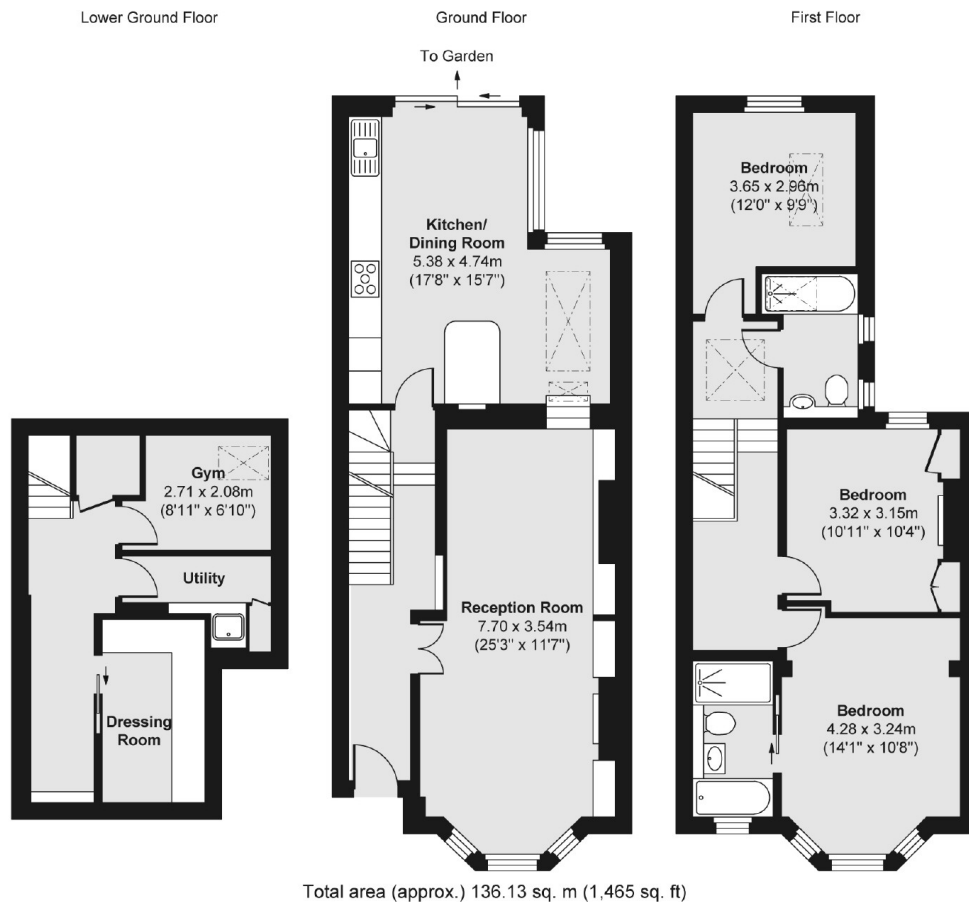


A truly exceptional three bedroom home, to the ground floor is a through reception room with bay window leading to the extended kitchen dining room with floor to ceiling views of the patio garden. The basement has been carefully designed offering a utility room, study/gym and dressing room. To the first floor is the principal bedroom with ensuite, two further double bedrooms and a bathroom.

Morval Road is enviably located and the base of the Poet's Corner just a short distance from Brockwell Park. Residents are spoilt for choice with local amenities ranging from Brixton Market all the way to the independent shops, bars and restaurants of Herne Hill and Dulwich Village. Commuters find themselves walking distance from both Brixton Underground (Victoria Line) and Herne Hill Railway (Thameslink) in addition to a number of regular bus routes into the City.







Jacksons Clapham
 73 Abbeville Road
 London
 SW4 9JN
 020 8875 7995
clapham.sales@jacksonsestateagents.com

Energy Rating: C We aim to make our particulars both accurate and reliable. However they are not guaranteed; nor do they form part of an offer or contract. If you require clarification on any points then please contact us, especially if you're traveling some distance to view. Please note that appliances and heating systems have not been tested and therefore no warranties can be given as to their good working order.