



UNION ROAD, SW4

£800,000

- Split level apartment
- 1584 SqFt
- Two bathrooms
- Private garden
- Off street parking
- Energy rating: C

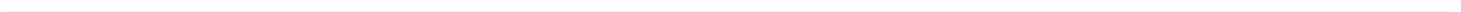




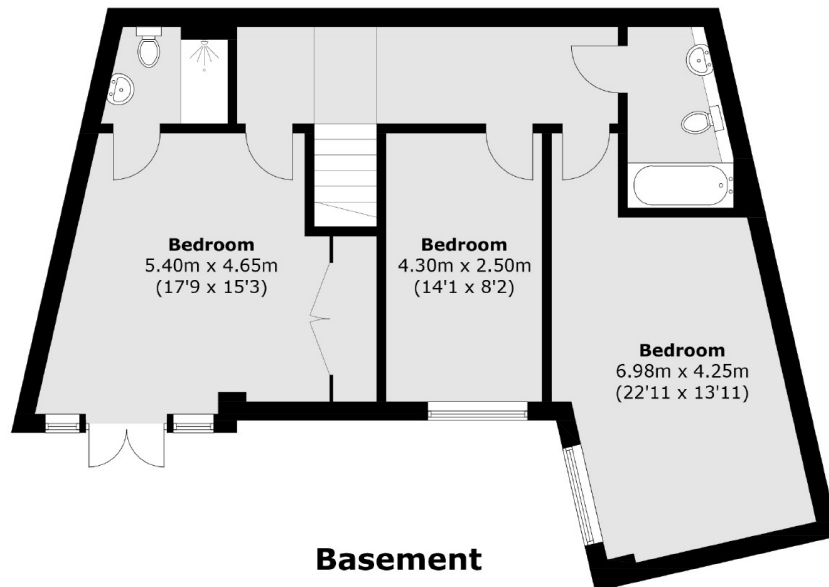
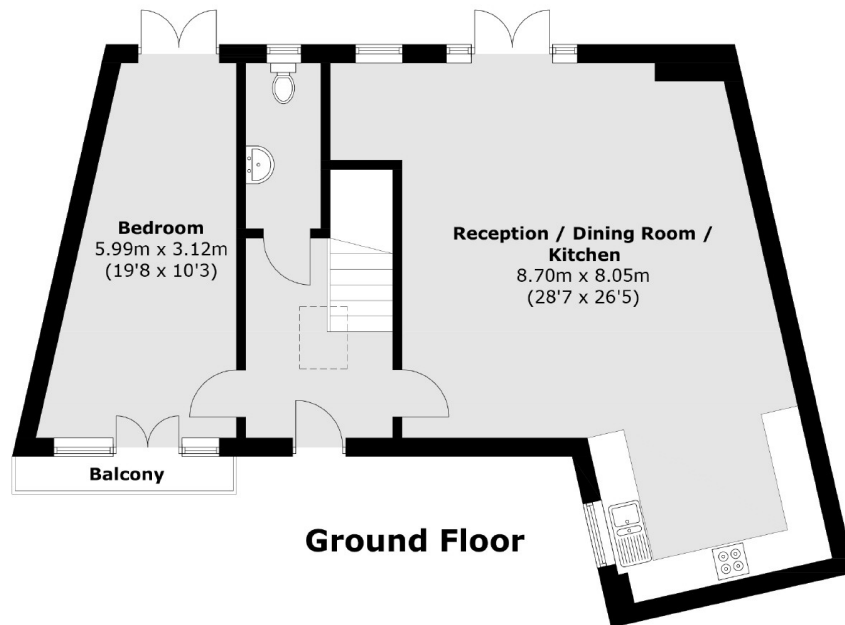
ABOUT THE HOME

A spacious four bedroom split level apartment measuring in excess of 1500 SqFt. The property has been well maintained by the current owners and is sold with no onward chain.

Union Road is a popular residential road located between Wandsworth Road and Stockwell Road. Residents have the use of an array of shops, bars and restaurants of Clapham High Street & Brixton Market. Several travel options are nearby including Wandsworth Road Overground, Stockwell Underground, Clapham North Underground as well as a number of regular bus routes in the City.







Total area (approx.): 147.2 sq. m (1,584.4 sq. ft)
Balcony: 1.9 sq. m (20.4 sq. ft)

JACKSONS CLAPHAM

73 Abbeville Road, London,
SW4 9JN
Sales: 020 8487 3177
Lettings: 020 8487 3178

Energy Rating: C We aim to make our particulars both accurate and reliable. However they are not guaranteed; nor do they form part of an offer or contract. If you require clarification on any points then please contact us, especially if you're traveling some distance to view. Please note that appliances and heating systems have not been tested and therefore no warranties can be given as to their good working order.