



Union Road, SW4

£950,000

A spacious four bedroom split level apartment measuring in excess of 1500 SqFt. The property has been well maintained by the current owners and is sold with no onward chain.

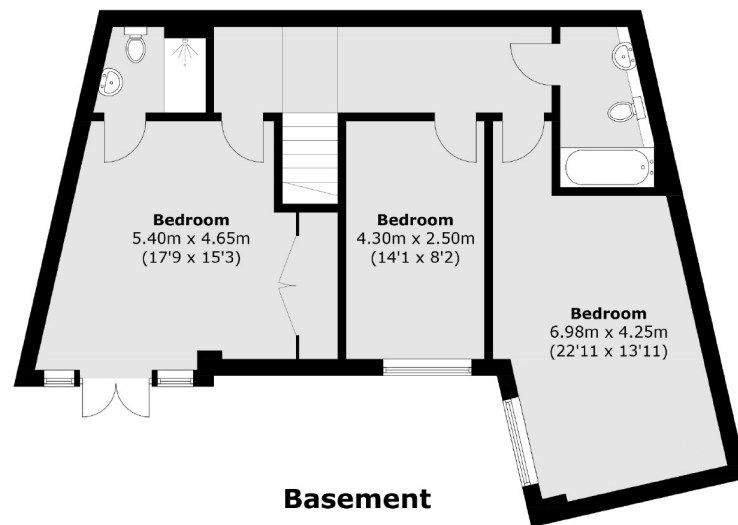
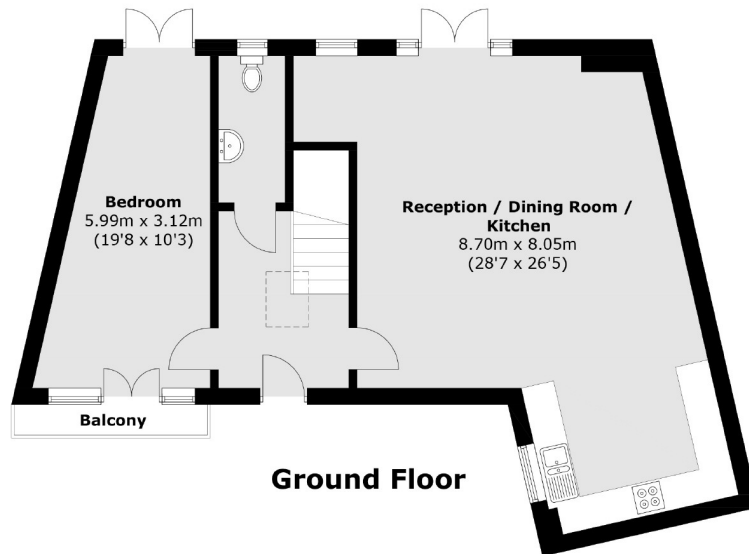
- Split Level Apartment
- 1584 SqFt
- Four Bedrooms
- Two Bathrooms
- Private Garden
- Off Street Parking



Union Road is a popular residential road located between Wandsworth Road and Stockwell Road. Residents have the use of an array of shops, bars and restaurants of Clapham High Street & Brixton Market. Several travel options are nearby including Wandsworth Road Overground, Stockwell Underground, Clapham North Underground as well as a number of regular bus routes in the City.







Total area (approx.): 147.2 sq. m (1,584.4 sq. ft)
Balcony: 1.9 sq. m (20.4 sq. ft)

Jacksons Clapham
73 Abbeville Road
London
SW4 9JN
020 8875 7995
clapham.sales@jacksonsstateagents.com

Energy Rating: C We aim to make our particulars both accurate and reliable. However they are not guaranteed; nor do they form part of an offer or contract. If you require clarification on any points then please contact us, especially if you're traveling some distance to view. Please note that appliances and heating systems have not been tested and therefore no warranties can be given as to their good working order.